

BEYOND
FLOORING



COMMERCIAL

**Product catalogue
2023**

CARPET TILES



COMMERCIAL

“

We offer top-quality products,
impeccable service,
innovative, sustainable production
and a proven track record...

But most of all,
we love helping to
achieve your goals.”

About IVC Commercial

As the commercial division of Unilin Group, IVC Commercial is focused on improving the productivity and wellbeing of users in spaces through innovative solutions that are easy to implement and affordable. Accountable for its actions, IVC Commercial designs and makes floors responsibly in Europe, developing a circular approach to the future of flooring.

Unilin is a global leader in interior design and construction products, such as laminate flooring, luxury vinyl tiles, heterogeneous vinyl, engineered wood flooring, carpet tiles, wall-to-wall broadloom, wood-based and decorative panels, industrial flooring, wall and roof systems and insulation boards. With more than 8000 employees in 105 locations across the globe constantly working on innovative solutions, they are proud to bring the newest technologies and materials into your projects.

For more information, contact info@ivc-commercial.com - www.ivc-commercial.com.



Gril Bruut Rupture 685

Carpet Tiles

The Collection

Art Intervention

- 06**
CREATIVE SPARK
- 10**
EXPANSION POINT
- 12**
BLURRED EDGE

Contour

- 14**
PERSPECTIVE
- 16**
VIEW

Light Art

- 18**
FLARE
- 20**
REFLECT

Pattern

- 22**
BALANCED
- 24**
TAILORED
- 26**
UNCHAINED

Immersion

- 28**
ALTERNATE
- 30**
LIBERATE
- 32**
ANIMATE

Imperfection

- 34**
GRIT
- 36**
BRUUT
- 38**
RUPURE

Rudiments

- 40**
BASALT
- 42**
JUTE
- 44**
TEAK
- 46**
CLAY
- 48**
CLAY CREATE
- 50**
METALLIC CLAY

Step Up

- 52**
STEP UP

BEYOND
FLOORING



Multi colour mix

Creative Spark

Art Intervention

- Construction: tufted 1/10" gauge loop
- Backing: EcoFlex™ Statera
- Pile material: 100% solution dyed nylon
- Dimensions - m²/box: 50 x 50 cm - 5 m²

- Pile weight: ± 540 g/m²
- Pile thickness: ± 3,1 mm
- Total thickness: ± 6,3 mm
- Wear classification: 33 / LC1

- Fire classification: Bfl-s1
- Impact sound reduction: ΔLw = 32 dB
- Sound absorption: 0,15 αw
- GUT-Prodís number: 3AA1D4DF

Creative Spark



LRV = Light Reflectance Value according to BS 8493, L = according to CIE L*a*b* colour space



646

848

685

911

Creative Spark



989 LRV: 4,37



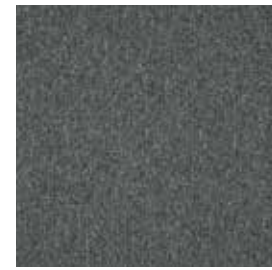
969 LRV: 12,73



419 LRV: 19,09



731 LRV: 25,98



979 LRV: 9,02 - L 38,33



927 LRV: 19,80



854 LRV: 8,29



733 LRV: 18,39



904 LRV: 14,44



559 LRV: 13,16



848 LRV: 3,95



751 LRV: 20,99



911 LRV: 31,04



545 LRV: 23,51



998 LRV: 2,29



745 LRV: 9,95

LRV = Light Reflectance Value according to BS 8493, L = according to CIE L*a*b* colour space

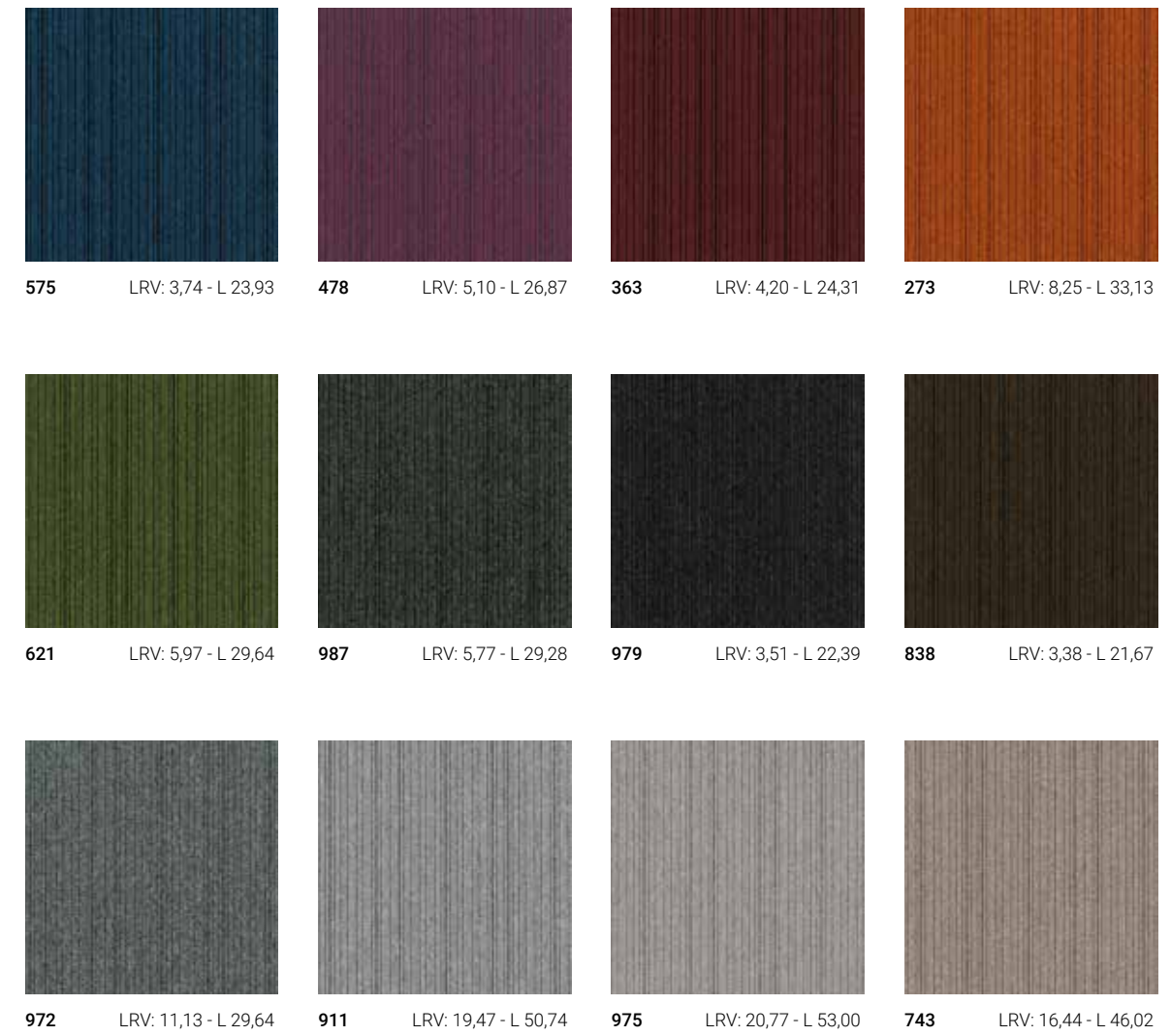


Expansion Point 621 - Creative Spark 646 - 621 - Basalt 685

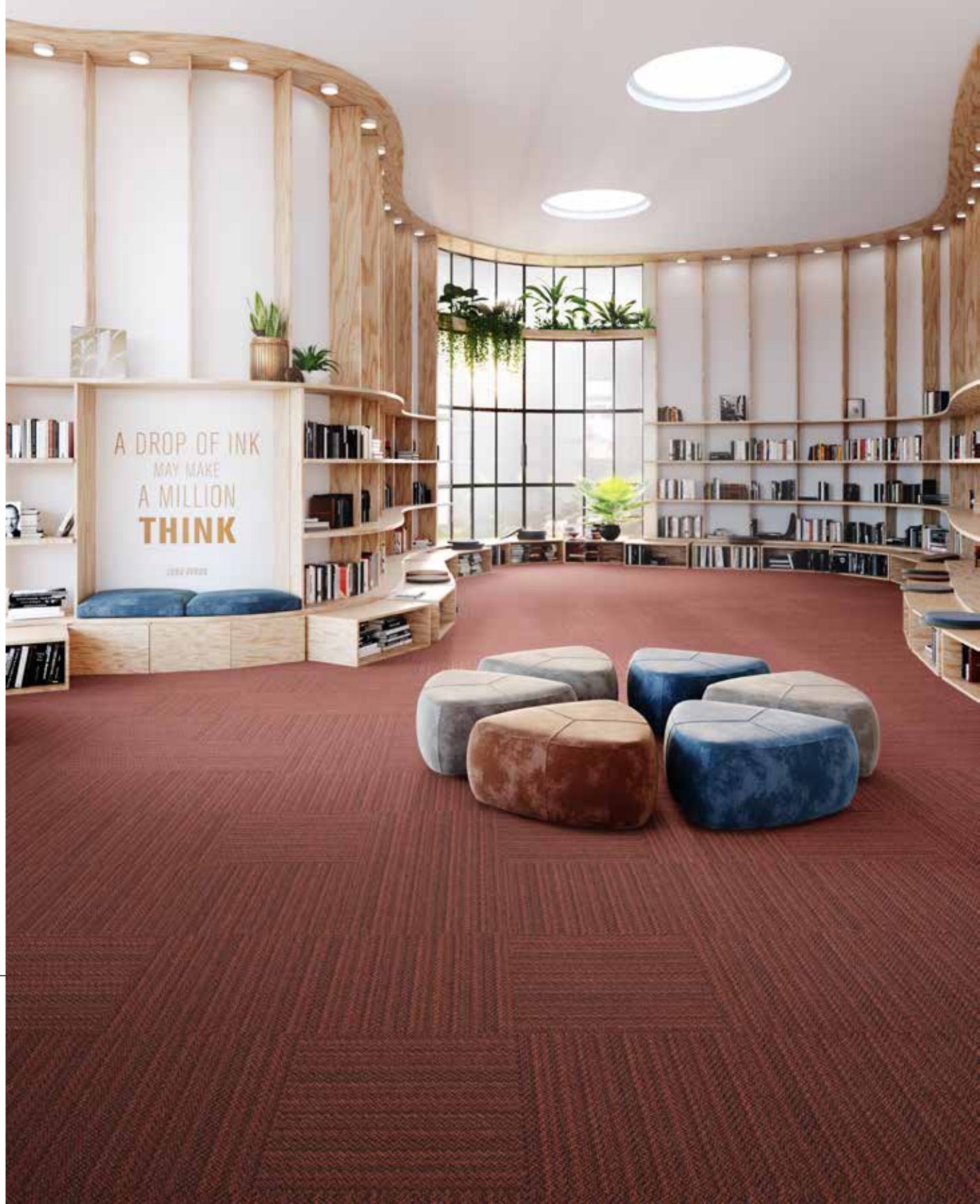
Expansion Point

Art Intervention

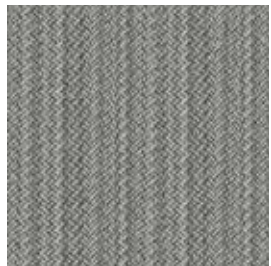
- Construction: tufted 1/10" gauge loop
- Backing: EcoFlex™ Statera
- Pile material: 100% solution dyed nylon
- Dimensions - m²/box: 50 x 50 cm - 5 m²
- Pile weight: ± 540 g/m²
- Pile thickness: ± 3,3 mm
- Total thickness: ± 6,6 mm
- Wear classification: 33 / LC21
- Fire classification: Bfl-s1
- Impact sound reduction: ΔLw = 27 dB
- Sound absorption: 0,15 αw
- GUT-Prodís number: F6619831



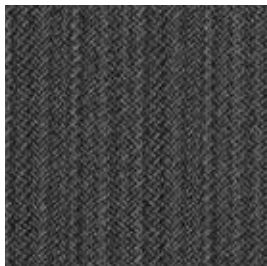
LRV = Light Reflectance Value according to BS 8493, L = according to CIE L*a*b* colour space



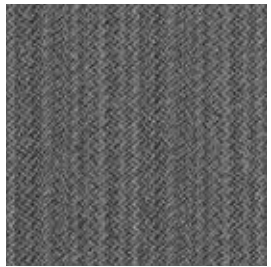
Blurred Edge



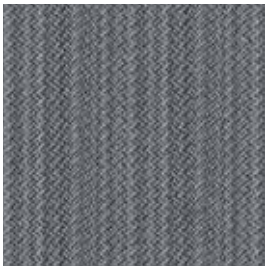
911 LRV: 17,78 - L 47,80



979 LRV: 5,08 - L 26,12



987 LRV: 8,18 - L 36,46



559 LRV: 13,19 - L 43,24



569 LRV: 6,37 - L 29,36



685 LRV: 4,11 - L 24,84



733 LRV: 15,59 - L 46,41



854 LRV: 8,74 - L 36,79



848 LRV: 5,35 - L 28,54



362 LRV: 4,06 - L 22,41

Blurred Edge

Art Intervention

- Construction: tufted 1/10" gauge loop
- Backing: EcoFlex™ Statera
- Pile material: 100% solution dyed nylon
- Dimensions - m²/box: 50 x 50 cm - 5 m²
- Pile weight: ± 540 g/m²
- Pile thickness: ± 2,5 mm
- Total thickness: ± 6,6 mm
- Wear classification: 33 / LC1
- Fire classification: Bfl-s1
- Impact sound reduction: ΔLw = 25 dB
- Sound absorption: 0,15 αw
- GUT-Prodix number: Ongoing

LRV = Light Reflectance Value according to BS 8493, L = according to CIE L*a*b* colour space



621

975

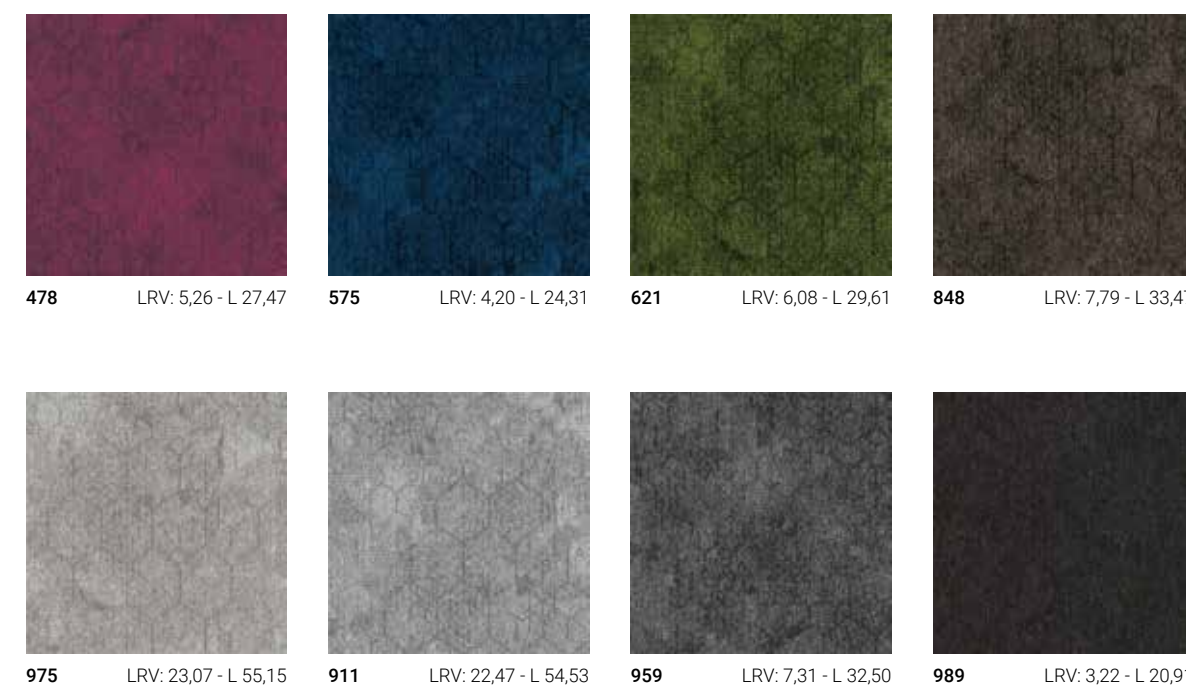
Perspective

Contour

- Construction: tufted 1/12" gauge loop
- Backing: EcoFlex™ Statera
- Pile material: 100% solution dyed nylon
- Dimensions - m²/box: 50 x 50 cm - 5 m²

- Pile weight: ± 600 g/m²
- Pile thickness: ± 3,1 mm
- Total thickness: ± 6,4 mm
- Wear classification: 33 / LC1

- Fire classification: Bfl-s1
- Impact sound reduction: ΔLw = 25 dB
- Sound absorption: 0,15 αw
- GUT-Prodís number: 6119BCAA



LRV = Light Reflectance Value according to BS 8493, L = according to CIE L*a*b* colour space



478 LRV: 5,75 - L 28,78



575 LRV: 4,87 - L 26,35



621 LRV: 6,59 - L 30,85



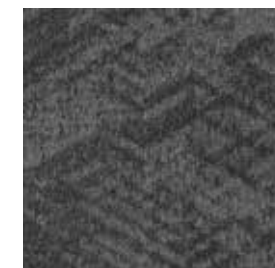
848 LRV: 6,49 - L 30,62



975 LRV: 23,86 - L 55,95



911 LRV: 23,07 - L 55,15



959 LRV: 7,81 - L 33,59



989 LRV: 2,92 - L 19,72

LRV = Light Reflectance Value according to BS 8493, L = according to CIE L*a*b* colour space

View

Contour

- Construction: tufted 1/12" gauge loop
- Backing: EcoFlex™ Statera
- Pile material: 100% solution dyed nylon
- Dimensions - m²/box: 50 x 50 cm - 5 m²
- Pile weight: ± 600 g/m²
- Pile thickness: ± 3,1 mm
- Total thickness: ± 6,4 mm
- Wear classification: 33 / LC1
- Fire classification: Bfl-s1
- Impact sound reduction: ΔLw = 25 dB
- Sound absorption: 0,15 αw
- GUT-Prodís number: CAC6CFE5



559

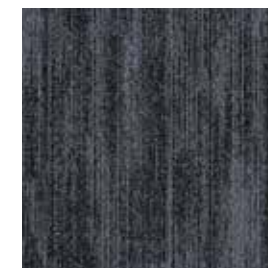
Flare

Light Art

- Construction: tufted 1/12" gauge loop
- Backing: EcoFlex™ Statera
- Pile material: 100% solution dyed nylon
- Dimensions - m²/box: 50 x 50 cm - 5 m²

- Pile weight: ± 540 g/m²
- Pile thickness: ± 3,0 mm
- Total thickness: ± 6,3 mm
- Wear classification: 33 / LC1

- Fire classification: Bfl-s1
- Impact sound reduction: ΔLw = 24 dB
- Sound absorption: 0,15 αw
- GUT-Prodís number: Ongoing



559 LRV: 8,37 - L 34,74



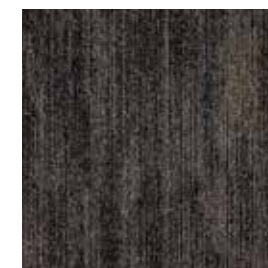
685 LRV: 5,58 - L 28,34



731 LRV: 10,64 - L 38,96



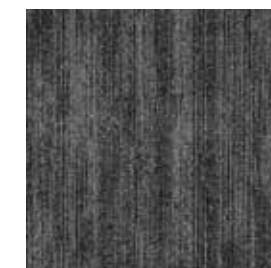
733 LRV: 10,00 - L 37,85



745 LRV: 6,22 - L 30,20



904 LRV: 8,00 - L 33,99



927 LRV: 9,71 - L 37,33



979 LRV: 7,74 - L 33,44

LRV = Light Reflectance Value according to BS 8493, L = according to CIE L*a*b* colour space



733

Reflect

Light Art

- Construction: tufted 1/12" gauge loop
- Backing: EcoFlex™ Statera
- Pile material: 100% solution dyed nylon
- Dimensions - m²/box: 50 x 50 cm - 5 m²
- Pile weight: ± 540 g/m²
- Pile thickness: ± 3,0 mm
- Total thickness: ± 6,1 mm
- Wear classification: 33 / LC1
- Fire classification: Bfl-s1
- Impact sound reduction: ΔLw = 24 dB
- Sound absorption: 0,15 αw
- GUT-Prodix number: Ongoing



559 LRV: 8,37 - L 34,74



685 LRV: 5,58 - L 28,34



731 LRV: 10,64 - L 38,86



733 LRV: 10,00 - L 37,85



745 LRV: 6,22 - L 30,20



904 LRV: 8,00 - L 33,99



927 LRV: 9,71 - L 37,33



979 LRV: 7,74 - L 33,44

LRV = Light Reflectance Value according to BS 8493, L = according to CIE L*a*b* colour space



Balanced

			
383	LRV: 17,40	419	LRV: 26,27
			
545	LRV: 13,95	559	LRV: 8,88
			
656	LRV: 15,60	731	LRV: 28,94
			
911	LRV: 32,63	969	LRV: 21,51
		979	LRV: 11,27
		989	LRV: 4,38

Balanced

Pattern

- Construction: tufted 1/12" gauge loop
- Backing: EcoFlex™ Statera
- Pile material: 100% SDN Thrive® Matter
- Dimensions - m²/box: 50 x 50 cm - 4,5 m²
- Pile weight: ± 720 g/m²
- Pile thickness: ± 3,5 mm
- Total thickness: ± 7,0 mm
- Wear classification: 33 / LC2
- Fire classification: Bfl-s1
- Impact sound reduction: ΔLw = 25 dB
- Sound absorption: 0,20 αw
- GUT-Prodís number: Ongoing

LRV = Light Reflectance Value according to BS 8493, L = according to CIE L*a*b* colour space



Tailored 468 - 911 - 969

Tailored

Pattern

- Construction: tufted 1/12" gauge loop
- Backing: EcoFlex™ Statera
- Pile material: 100% SDN Thrive® Matter
- Dimensions - m²/box: 50 x 50 cm - 4,5 m²

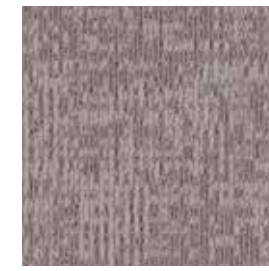
- Pile weight: ± 720 g/m²
- Pile thickness: ± 3,7 mm
- Total thickness: ± 6,9 mm
- Wear classification: 33 / LC2

- Fire classification: Bfl-s1
- Impact sound reduction: ΔLw = 25 dB
- Sound absorption: 0,20 aw
- GUT-Prodis number: Ongoing

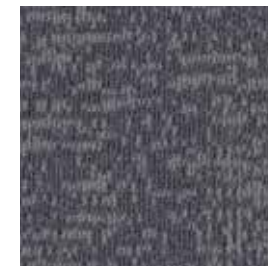
Tailored



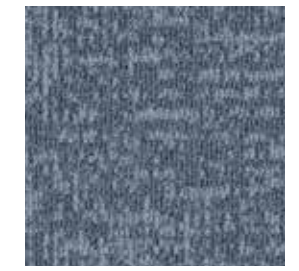
383 LRV: 17,40



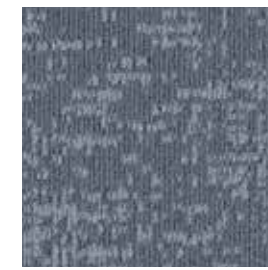
419 LRV: 26,27



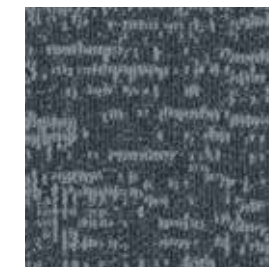
468 LRV: 16,24



542 LRV: 15,53



545 LRV: 13,95



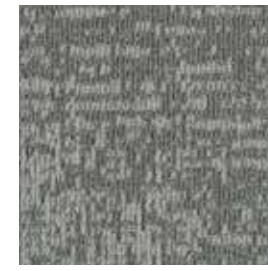
559 LRV: 8,88



569 LRV: 4,08



627 LRV: 23,73



656 LRV: 15,60



731 LRV: 28,94



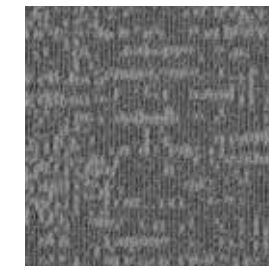
848 LRV: 9,79



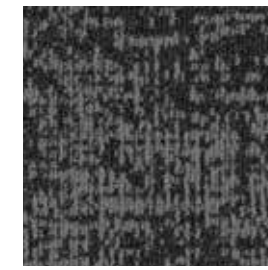
904 LRV: 20,08



911 LRV: 32,63



969 LRV: 21,51



979 LRV: 11,27



989 LRV: 4,38

LRV = Light Reflectance Value according to BS 8493, L = according to CIE L*a*b* colour space



731 ○

Unchained

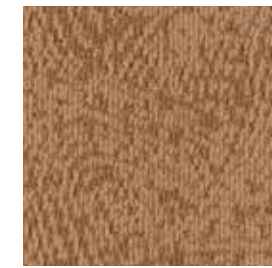
Pattern

- Construction: tufted 1/12" gauge loop
- Backing: EcoFlex™ Statera
- Pile material: 100% SDN Thrive® Matter
- Dimensions - m²/box: 50 x 50 cm - 4,5 m²

- Pile weight: ± 720 g/m²
- Pile thickness: ± 3,4 mm
- Total thickness: ± 7,1 mm
- Wear classification: 33 / LC2

- Fire classification: Bfl-s1
- Impact sound reduction: ΔLw = 25 dB
- Sound absorption: 0,20 αw
- GUT-Prodís number: Ongoing

Unchained



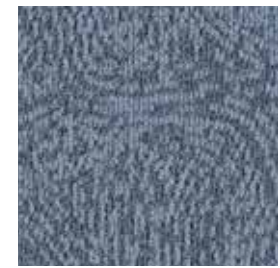
383 LRV: 17,40



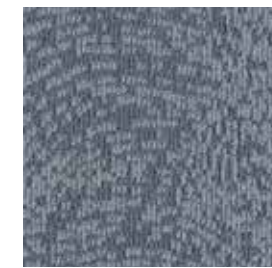
419 LRV: 26,27



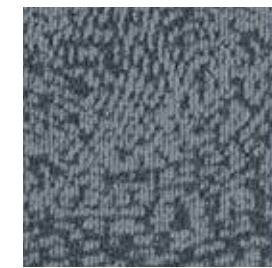
468 LRV: 16,24



542 LRV: 15,53



545 LRV: 13,95



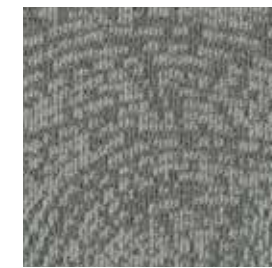
559 LRV: 8,88



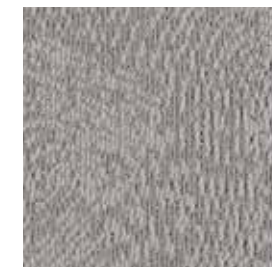
569 LRV: 4,08



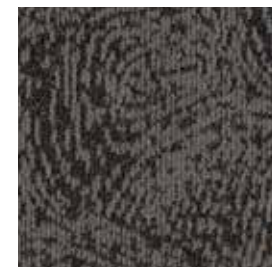
627 LRV: 23,73



656 LRV: 15,60



731 LRV: 28,94



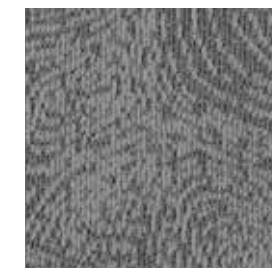
848 LRV: 9,79



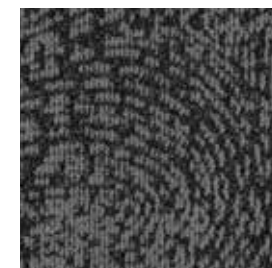
904 LRV: 20,08



911 LRV: 32,63



969 LRV: 21,51

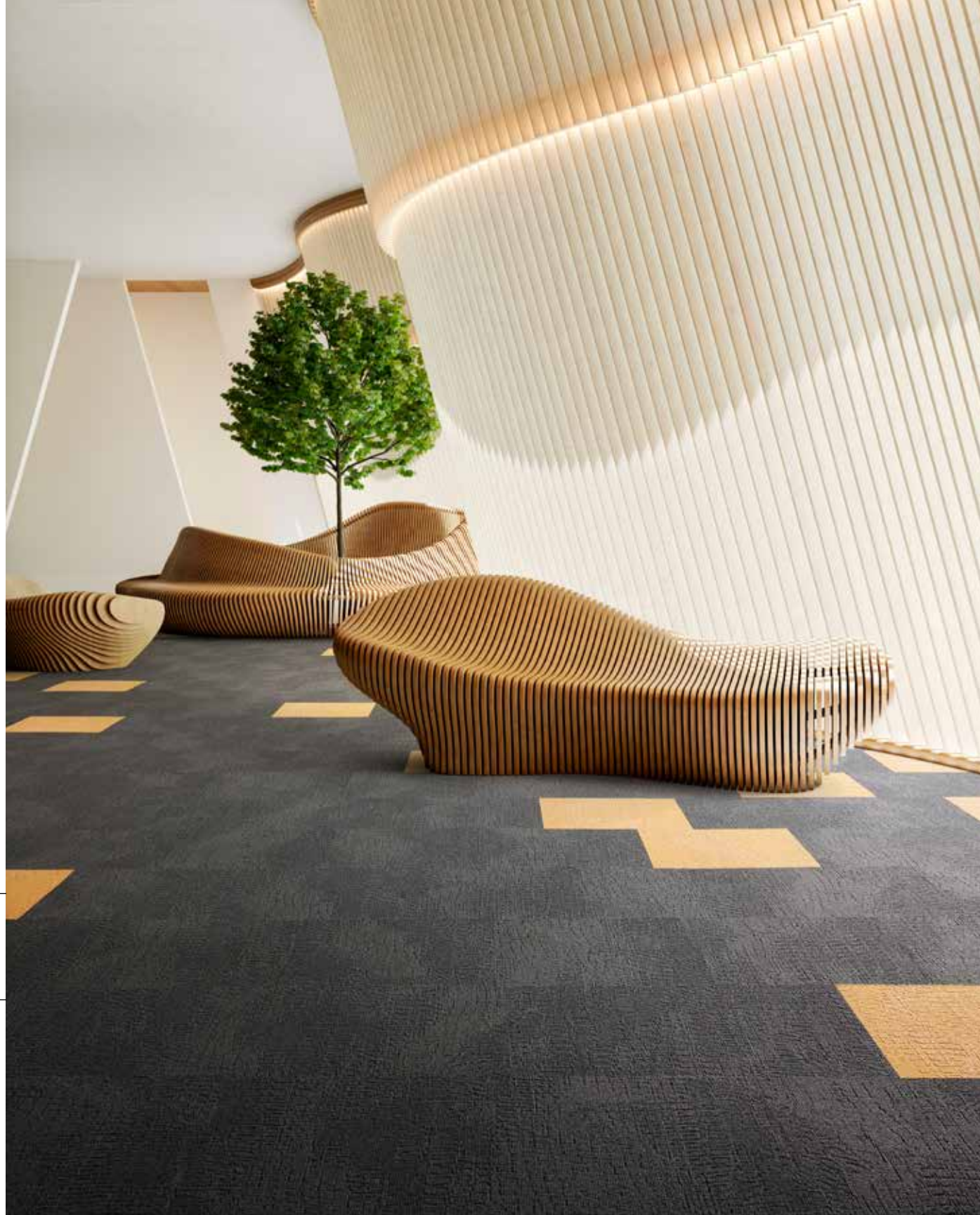


979 LRV: 11,27



989 LRV: 4,38

LRV = Light Reflectance Value according to BS 8493, L = according to CIE L*a*b* colour space



232

848

Alternate

Immersion

- Construction: tufted 1/12" gauge loop
- Backing: EcoFlex™ Statera
- Pile material: 100% SDN Thrive® Matter
- Dimensions - m²/box: 50 x 50 cm - 4,5 m²

- Pile weight: ± 700 g/m²
- Pile thickness: ± 3,4 mm
- Total thickness: ± 7,0 mm
- Wear classification: 33 / LC2

- Fire classification: Bfl-s1
- Impact sound reduction: ΔLw = 24 dB
- Sound absorption: 0,15 αw
- GUT-Prodís number: Ongoing

Alternate



140 LRV: 41,01 - L 70,19



232 LRV: 28,95 - L 60,74



467 LRV: 6,77 - L 31,29



474 LRV: 6,16 - L 29,81



574 LRV: 10,84 - L 39,31



621 LRV: 5,32 - L 27,64



699 LRV: 3,52 - L 22,02



543 LRV: 3,74 - L 22,80



545 LRV: 18,01 - L 49,51



911 LRV: 25,49 - L 57,55



969 LRV: 16,01 - L 46,99



559 LRV: 10,89 - L 39,40



731 LRV: 24,64 - L 56,72



904 LRV: 14,51 - L 44,96



979 LRV: 11,31 - L 40,09



989 LRV: 5,74 - L 28,75



569 LRV: 5,59 - L 28,36



848 LRV: 4,55 - L 25,42

LRV = Light Reflectance Value according to BS 8493, L = according to CIE L*a*b* colour space



Liberate

Immersion

- Construction: tufted 1/12" gauge loop
- Backing: EcoFlex™ Statera
- Pile material: 100% SDN Thrive® Matter
- Dimensions - m²/box: 50 x 50 cm - 4,5 m²
- Pile weight: ± 700 g/m²
- Pile thickness: ± 3,3 mm
- Total thickness: ± 7,3 mm
- Wear classification: 33 / LC2
- Fire classification: Bfl-s1
- Impact sound reduction: ΔLw = 25 dB
- Sound absorption: 0,15 αw
- GUT-Prodís number: Ongoing



Multi colour mix

Animate

Immersion

- Construction: tufted 1/12" gauge loop
- Backing: EcoFlex™ Statera
- Pile material: 100% SDN Thrive® Matter
- Dimensions - m²/box: 50 x 50 cm - 4,5 m²

- Pile weight: ± 700 g/m²
- Pile thickness: ± 3,3 mm
- Total thickness: ± 7,2 mm
- Wear classification: 33 / LC2

- Fire classification: Bfl-s1
- Impact sound reduction: ΔLw = 24 dB
- Sound absorption: 0,15 αw
- GUT-Prodix number: Ongoing

Animate



140 LRV: 41,01 - L 70,19



232 LRV: 28,95 - L 60,74



467 LRV: 6,77 - L 31,29



474 LRV: 6,16 - L 29,81



574 LRV: 10,84 - L 39,31



621 LRV: 5,32 - L 27,64



699 LRV: 3,52 - L 22,02



543 LRV: 3,74 - L 22,80



545 LRV: 18,01 - L 49,51



911 LRV: 25,49 - L 57,55



969 LRV: 16,01 - L 46,99



559 LRV: 10,89 - L 39,40



731 LRV: 24,64 - L 56,72



904 LRV: 14,51 - L 44,96



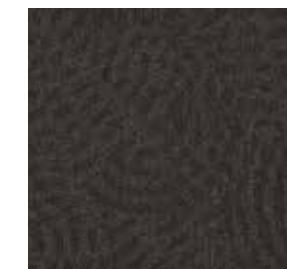
979 LRV: 11,31 - L 40,09



989 LRV: 5,74 - L 28,75

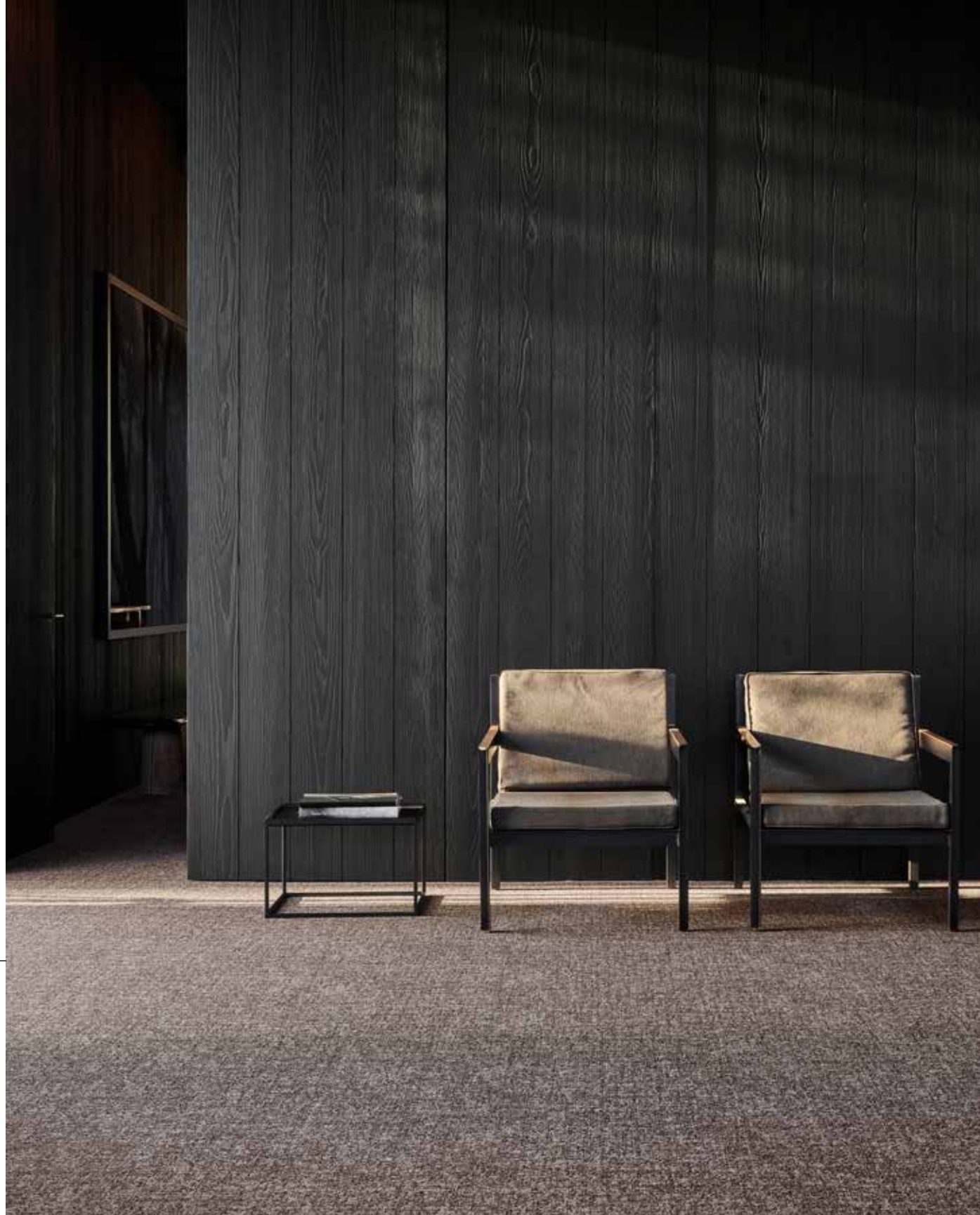


569 LRV: 5,59 - L 28,36



848 LRV: 4,55 - L 25,42

LRV = Light Reflectance Value according to BS 8493, L = according to CIE L*a*b* colour space



745

Grit

Imperfection

- Construction: 1/12" Pattern Perfect®
- Backing: EcoFlex™ Echo (94% recycled felt)
- Pile material: ECONYL® - 100% regenerated nylon
- Dimensions - m²/box: 25 x 100 cm - 4 m²
- Pile weight: ± 750 g/m²
- Pile thickness: ± 3,2 mm
- Total thickness: ± 8,6 mm
- Wear classification: 33 / LC2
- Fire classification: Bfl-s1
- Impact sound reduction: ΔLw = 29 dB
- Sound absorption: 0,25 aw
- GUT-Prodís number: Ongoing



975 LRV: 21,33 - L 53,31



751 LRV: 30,19 - L 61,82



911 LRV: 20,27 - L 52,14



733 LRV: 15,13 - L 45,81



545 LRV: 21,83 - L 53,85



685 LRV: 11,20 - L 39,91



569 LRV: 10,31 - L 38,40



969 LRV: 9,67 - L 37,24



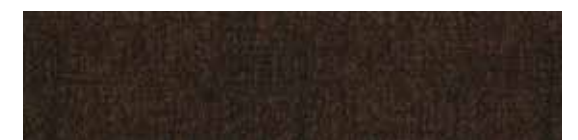
959 LRV: 7,69 - L 33,37



745 LRV: 11,36 - L 40,17



989 LRV: 5,30 - L 27,59



838 LRV: 3,05 - L 20,23

LRV = Light Reflectance Value according to BS 8493, L = according to CIE L*a*b* colour space



969
989

Bruut

Imperfection

- Construction: 1/12" Pattern Perfect®
- Backing: EcoFlex™ Echo (94% recycled felt)
- Pile material: ECONYL® - 100% regenerated nylon
- Dimensions - m²/box: 25 x 100 cm - 4 m²

- Pile weight: ± 780 g/m²
- Pile thickness: ± 3,3 mm
- Total thickness: ± 8,7 mm
- Wear classification: 33 / LC2

- Fire classification: Bfl-s1
- Impact sound reduction: ΔLw = 31 dB
- Sound absorption: 0,30 aw
- GUT-Prodix number: Ongoing



975 LRV: 25,80 - L 57,85



751 LRV: 34,14 - L 65,07



911 LRV: 23,52 - L 55,61



733 LRV: 16,00 - L 46,97



545 LRV: 25,29 - L 57,36



685 LRV: 12,85 - L 42,53



569 LRV: 11,70 - L 40,74



969 LRV: 11,42 - L 40,27



959 LRV: 9,49 - L 36,91



745 LRV: 11,77 - L 40,85



989 LRV: 4,68 - L 25,79



838 LRV: 3,48 - L 21,88

LRV = Light Reflectance Value according to BS 8493, L = according to CIE L*a*b* colour space



975 LRV: 23,55 - L 55,63



751 LRV: 33,07 - L 64,22



911 LRV: 21,49 - L 53,48



733 LRV: 15,51 - L 46,32



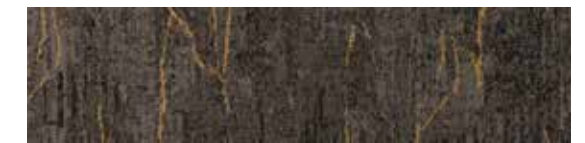
545 LRV: 25,02 - L 57,09



685 LRV: 12,32 - L 41,72



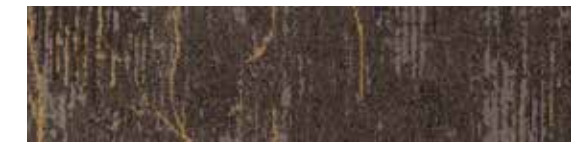
569 LRV: 11,23 - L 39,97



969 LRV: 11,58 - L 40,54



959 LRV: 9,02 - L 36,02



745 LRV: 12,97 - L 42,72



989 LRV: 5,23 - L 27,38



838 LRV: 5,64 - L 28,49

Rupture

Imperfection

- Construction: 1/12" Pattern Perfect®
- Backing: EcoFlex™ Echo (94% recycled felt)
- Pile material: ECONYL® - 100% regenerated nylon
- Dimensions - m²/box: 25 x 100 cm - 4 m²
- Pile weight: ± 780 g/m²
- Pile thickness: ± 3,3 mm
- Total thickness: ± 8,7 mm
- Wear classification: 33 / LC2
- Fire classification: Bfl-s1
- Impact sound reduction: ΔLw = 30 dB
- Sound absorption: 0,30 aw
- GUT-Prodix number: Ongoing

LRV = Light Reflectance Value according to BS 8493, L = according to CIE L*a*b* colour space



Basalt

569
545

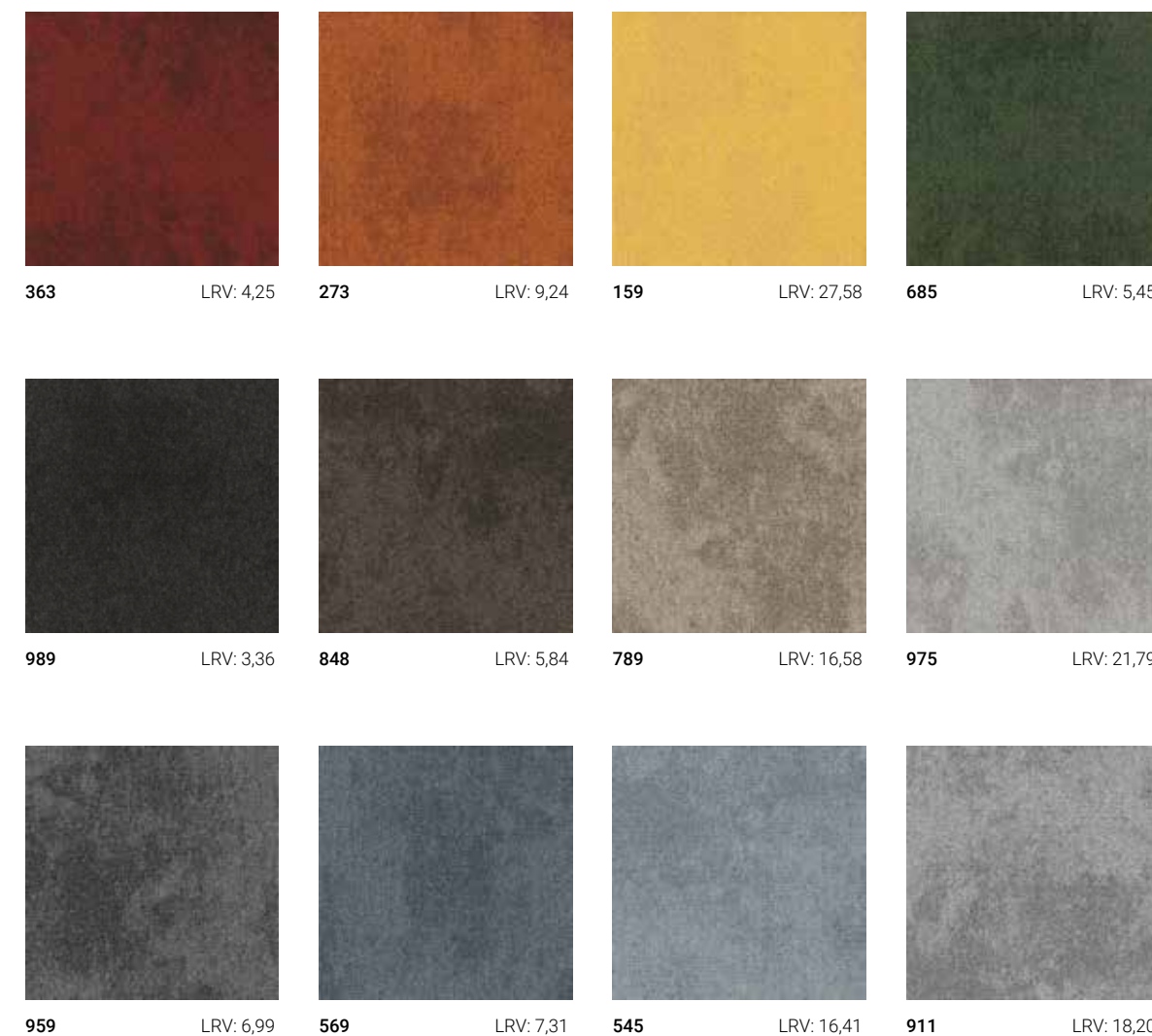
Basalt

Rudiments

- Construction: tufted 1/12" gauge loop
- Backing: EcoFlex™ Statera
- Pile material: 100% solution dyed nylon
- Dimensions - m²/box: 50 x 50 cm - 5 m²

- Pile weight: ± 600 g/m²
- Pile thickness: ± 3,1 mm
- Total thickness: ± 6,4 mm
- Wear classification: 33 / LC1

- Fire classification: Bfl-s1
- Impact sound reduction: ΔLw = 28 dB
- Sound absorption: 0,15 αw
- GUT-Prodís number: 65EB708B



LRV = Light Reflectance Value according to BS 8493



959
989
159

Jute

Rudiments

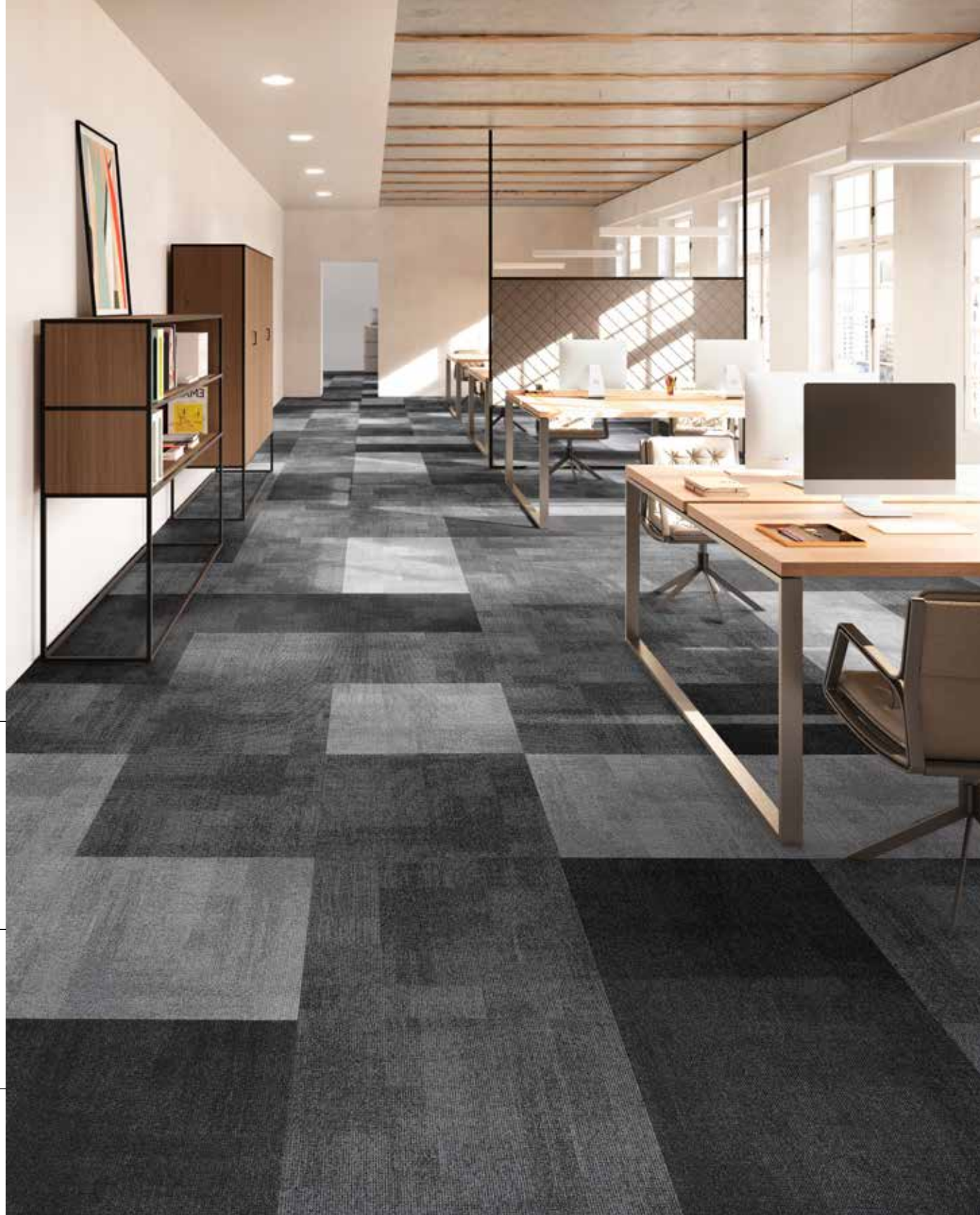
- Construction: tufted 1/12" gauge loop
- Backing: EcoFlex™ Statera
- Pile material: 100% solution dyed nylon
- Dimensions - m²/box: 50 x 50 cm - 5 m²

- Pile weight: ± 600 g/m²
- Pile thickness: ± 3,2 mm
- Total thickness: ± 6,4 mm
- Wear classification: 33 / LC2

- Fire classification: Bfl-s1
- Impact sound reduction: ΔLw = 28 dB
- Sound absorption: 0,15 αw
- GUT-Prodís number: 94EFCC68

363 LRV: 4,25	273 LRV: 9,24	159 LRV: 27,58	685 LRV: 5,45
989 LRV: 3,36	848 LRV: 5,84	789 LRV: 16,58	975 LRV: 21,79
959 LRV: 6,99	569 LRV: 7,31	545 LRV: 16,41	911 LRV: 18,20

LRV = Light Reflectance Value according to BS 8493, L = according to CIE L*a*b* colour space



959

911

989

Teak

Rudiments

- Construction: tufted 1/12" gauge loop
- Backing: EcoFlex™ Statera
- Pile material: 100% solution dyed nylon
- Dimensions - m²/box: 50 x 50 cm - 5 m²

- Pile weight: ± 600 g/m²
- Pile thickness: ± 2,9 mm
- Total thickness: ± 6,4 mm
- Wear classification: 33 / LC1

- Fire classification: Bfl-s1
- Impact sound reduction: ΔLw = 28 dB
- Sound absorption: 0,15 αw
- GUT-Prodís number: AB56D646

Teak



363 LRV: 4,25



273 LRV: 9,24



159 LRV: 27,58



685 LRV: 5,45



989 LRV: 3,36



848 LRV: 5,84



789 LRV: 16,58



975 LRV: 21,79



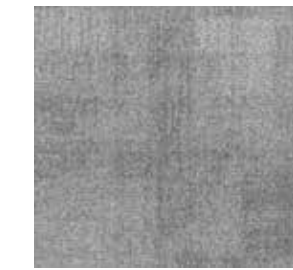
959 LRV: 6,99



569 LRV: 7,31



545 LRV: 16,41



911 LRV: 18,20

LRV = Light Reflectance Value according to BS 8493, L = according to CIE L*a*b* colour space



Clay 911 - 975

Clay

Rudiments

- Construction: tufted 1/12" gauge loop
- Backing: EcoFlex™ Statera
- Pile material: 100% solution dyed nylon
- Dimensions - m²/box: 25 x 100 cm - 5 m²
- Pile weight: ± 600 g/m²
- Pile thickness: ± 3,4 mm
- Total thickness: ± 7,1 mm
- Wear classification: 33 / LC1
- Fire classification: Bfl-s1
- Impact sound reduction: ΔLw = 28 dB
- Sound absorption: 0,15 αw
- GUT-Prodís number: E4C2F79C

Clay



975 LRV: 23,93 - L 54,94



685 LRV: 5,19 - L 26,48



789 LRV: 15,48 - L 49,29



569 LRV: 8,75 - L 39,11



848 LRV: 6,41 - L 28,26



545 LRV: 16,32 - L 49,28



988 LRV: 2,70 - L 20,68



911 LRV: 22,14 - L 49,80



363 LRV: 3,76 - L 21,08



959 LRV: 8,92 - L 29,14



273 LRV: 8,08 - L 34,74



989 LRV: 3,40 - L 23,02

LRV = Light Reflectance Value according to BS 8493, L = according to CIE L*a*b* colour space



Clay Create 955 - 977 - 979

Clay Create

Rudiments

- Construction: tufted 1/12" gauge loop
- Backing: EcoFlex™ Statera
- Pile material: 100% solution dyed nylon
- Dimensions - m²/box: 25 x 100 cm - 5 m²

- Pile weight: ± 600 g/m²
- Pile thickness: ± 3,4 mm
- Total thickness: ± 7,1 mm
- Wear classification: 33 / LC1

- Fire classification: Bfl-s1
- Impact sound reduction: ΔLw = 28 dB
- Sound absorption: 0,15 αw
- GUT-Prodís number: 5E8698AB

Clay Create



977 LRV: 23,40 - L 54,85



699 LRV: 3,14 - L 22,84



872 LRV: 12,76 - L 39,73



599 LRV: 3,03 - L 27,35



887 LRV: 2,97 - L 20,00



556 LRV: 11,63 - L 39,77



987 LRV: 5,01 - L 21,47



594 LRV: 16,70 - L 52,41



339 LRV: 3,48 - L 23,56



955 LRV: 10,18 - L 36,61



325 LRV: 7,46 - L 35,11



979 LRV: 4,79 - L 29,01

LRV = Light Reflectance Value according to BS 8493, L = according to CIE L*a*b* colour space



Metallic Clay 559 - 919 / Clay 569

Metallic Clay

Rudiments

- Construction: tufted 1/12" gauge loop
- Backing: EcoFlex™ Statera
- Pile material: 100% solution dyed nylon
- Dimensions - m²/box: 25 x 100 cm - 5 m²
- Pile weight: ± 600 g/m²
- Pile thickness: ± 3,4 mm
- Total thickness: ± 7,1 mm
- Wear classification: 33 / LC1
- Fire classification: Bfl-s1
- Impact sound reduction: ΔLw = 26 dB
- Sound absorption: 0,20 αw
- GUT-Prodís number: 9ADE6ED5

Metallic Clay



778

LRV: 15,86 - L 46,79



964

LRV: 20,12 - L 51,96



845

LRV: 8,28 - L 34,55



919

LRV: 18,19 - L 49,73



984

LRV: 5,97 - L 29,32



559

LRV: 10,87 - L 39,36



985

LRV: 5,56 - L 28,27



648

LRV: 5,12 - L 27,08



947

LRV: 8,98 - L 55,95

LRV = Light Reflectance Value according to BS 8493, L = according to CIE L*a*b* colour space



Step Up

955

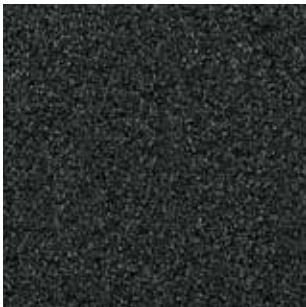
- Construction: 5/32" Tip Sheared
- Backing: EcoFlex™ NXT
- Pile material: 100% Duracolor® Premium Nylon (30% recycled content)
- Dimensions - m²/box: 60,96 cm x 60,96 cm - 5,2 m²

- Pile weight: ± 1288 g/m²
- Pile thickness: ± 5,2 mm
- Total thickness: ± 9 mm
- Wear classification: 33 / LC3

- Fire classification: Bfl-s1
- Impact sound reduction: ΔLw = 29dB
- Sound absorption: In progress
- GUT-ProdIs number: In progress



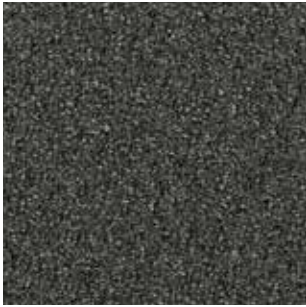
955 LRV: 5,16



989 LRV: 2,51



859 LRV: 4,52



983 LRV: 3,20

LRV = Light Reflectance Value according to BS 8493



Innovative secondary backing

EcoFlex™ Echo

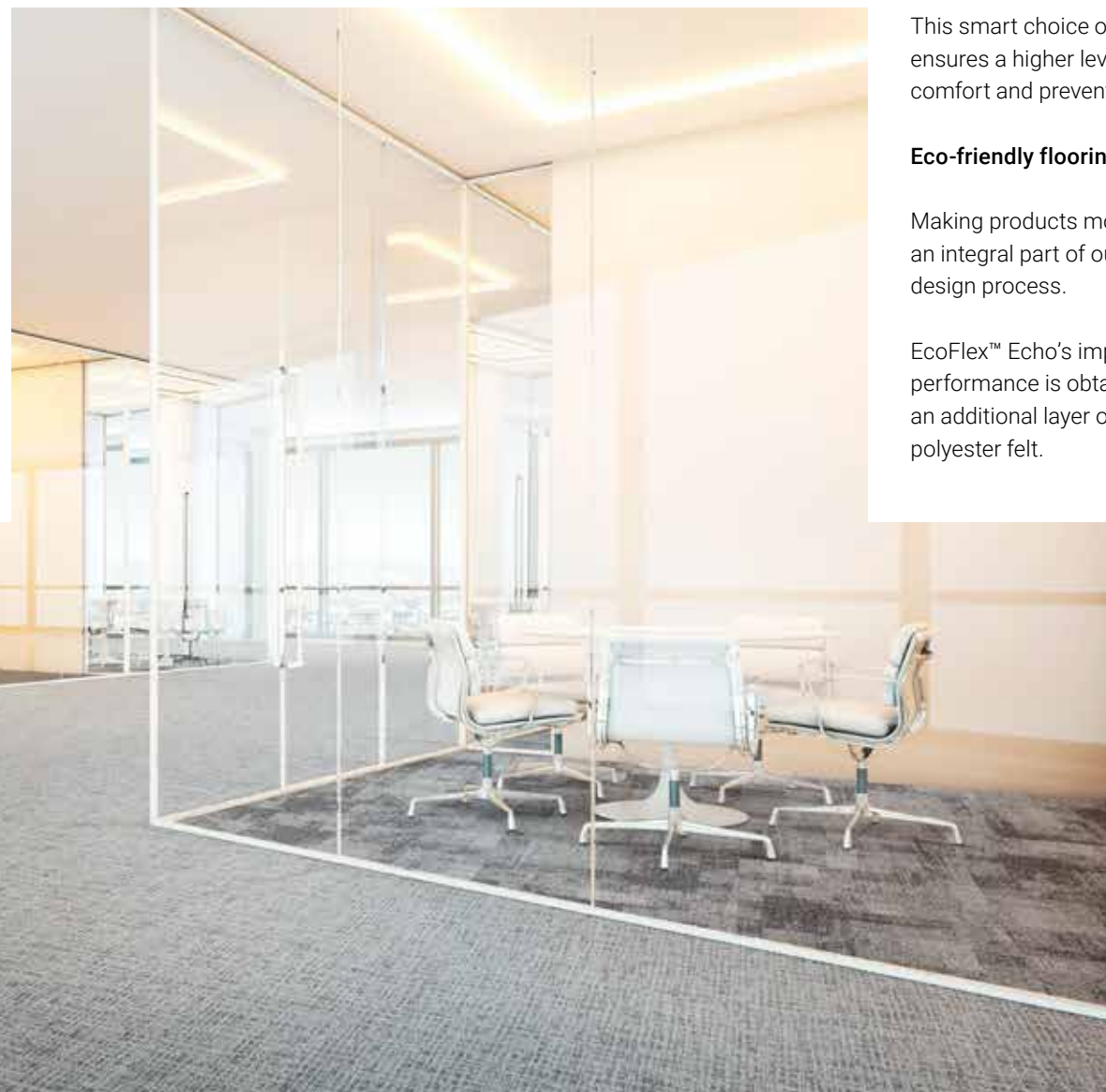
Backing every flooring project

At IVC Commercial we believe everyone is entitled to better acoustics and ergonomic comfort. That's why we've developed a superior backing that considers acoustic insulation, sound absorption and underfoot comfort.

So, when there's need for specific technical requirements regarding the acoustics of a space, EcoFlex™ Echo provides the answer.

Offering improved levels of impact sound reduction and sound absorption, EcoFlex™ Echo carpet tiles are built to last. Tested in accordance with the EN1307 standard, EcoFlex™ Echo delivers high quality in all aspects, from dimensional stability and burning behaviour to a perfect seam finish.

Standard IVC Commercial Carpet Tiles with the EcoFlex™ Statera backing system are also developed with attention to acoustic properties. They offer a qualitative solution for projects where no specific values are required.



Going beyond acoustics

Composed for improved comfort

Dedicated to the future of flooring and the lasting comfort of our customers, we are continuously committed to ensuring the long-term quality of our products.

This smart choice of material also ensures a higher level of underfoot comfort and prevents muscle fatigue.

Eco-friendly flooring

Making products more sustainable is an integral part of our innovation and design process.

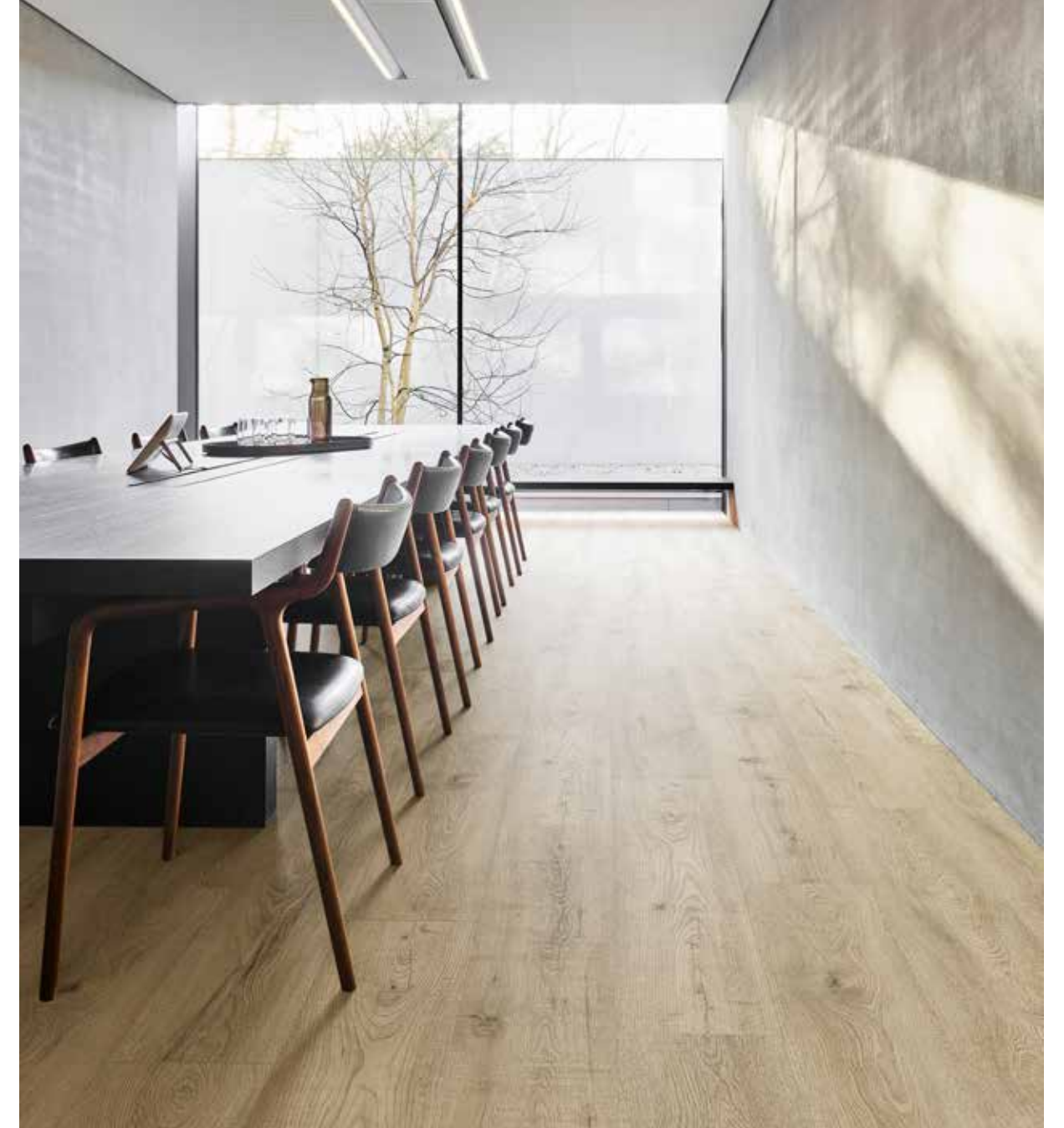
EcoFlex™ Echo's improved acoustic performance is obtained through an additional layer of 94% recycled polyester felt.

Improved performance and underfoot comfort is obtained through a **94% recycled polyester felt** layer



Standard acoustic offer

EcoFlex Echo is available on a selection of products in a variety of colours from stock. The backing can be specified on other carpet tiles subject to a minimum order quantity



Heterogeneous Vinyl

Easy, durable, versatile

Our sheet vinyl collections are the solution for a stunning floor that's easy to install and maintain. Use them for all your projects; retail, offices, day care centres, social housing, and even schools. Wet jackets, muddy shoes and noisy students are no problem; our heterogeneous vinyl is at the top of its class when it comes to durability, hygiene and acoustic performance.

Luxury Vinyl Tiles

Each plank has its own personality

Our LVT collections reflect the unique patterns and textures found in nature, while offering you the easy installation and maintenance of vinyl floors. The abundance of designs to choose from – oak, teak, concrete and granite are only a few of them – give you the freedom to create truly unique spaces. We've even adapted the shape of our planks to match your project's needs. From triangular to octagonal boards: we'll make them for you.

Easy installation

Flawless combinations

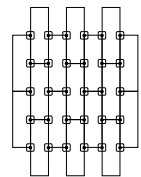
Finding the right floor for your project is one thing, but installing it can be a cumbersome process. Not to worry: IVC hands you the tools to ease this step.

FlexLok

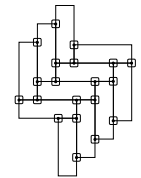
The innovative FlexLok system is the ideal alternative to traditional adhesive installation methods. The odorless dry technique virtually eliminates harmful VOCs and can be used on all underlays, for all IVC carpet tiles. Rely on FlexLok for a fast, easy installation of flexible, floating floors, without any glue. Moreover, the FlexLok system is Declare, HPD & DRI Green label certified.



Installing planks

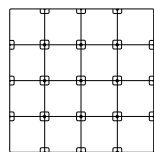


Lay the first row of planks and put FlexLok pads at each joint, adhesive side up. Install the remaining carpet tiles, placing FlexLok tabs as illustrated in the image.

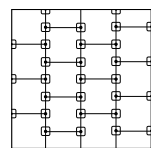


For herringbone designs, put FlexLok pads on each corner, adhesive side up.

Installing tiles



Quarter turn, monolithic, and multi-directional
Put FlexLok pads at each corner of the tiles, adhesive side up.



Brick and Ashlar
Lay the first row of planks and put FlexLok pads at each joint, adhesive side up. Install the remaining carpet tiles, placing FlexLok tabs as illustrated in the image.



“

Our broad portfolio of 100% in-house designed Carpet Tiles, Luxury Vinyl Tiles and Heterogeneous Vinyl undoubtedly holds the key for your project.

What's more, you can combine our Luxury Vinyl Tiles, Heterogeneous Vinyl and Carpet Tiles to create a layout that works for your space.”

Future-proof, for you and for the planet

At IVC Group, we truly believe in products that are developed with the future in mind. That's why we take the time to pause and reflect on the impacts of our entire strategy and operation. But we also realise that actions speak louder than words, so here's how we raise the industry standard for sustainability, day after day.

“

Through our certified processes, skilled and inspired people and product portfolio that combines good value and corporate social responsibility, we really make the difference, for you and for the planet.”

- Through resource conservation and waste reduction, we minimise the environmental impact of our manufacturing and distribution operations.
- Our energy-efficient flooring plants are among the leanest and greenest in their class.
- To get our products to you, inland waterways are the logical choice.
- We invest in clean-air technology and cutting-edge manufacturing methods.
- We use as many recycled or renewable materials as possible – think of eco-friendly inks and recycled PVC.
- We hold all suppliers accountable for ensuring that products are made in a responsible manner – one that respects both labour and environment.

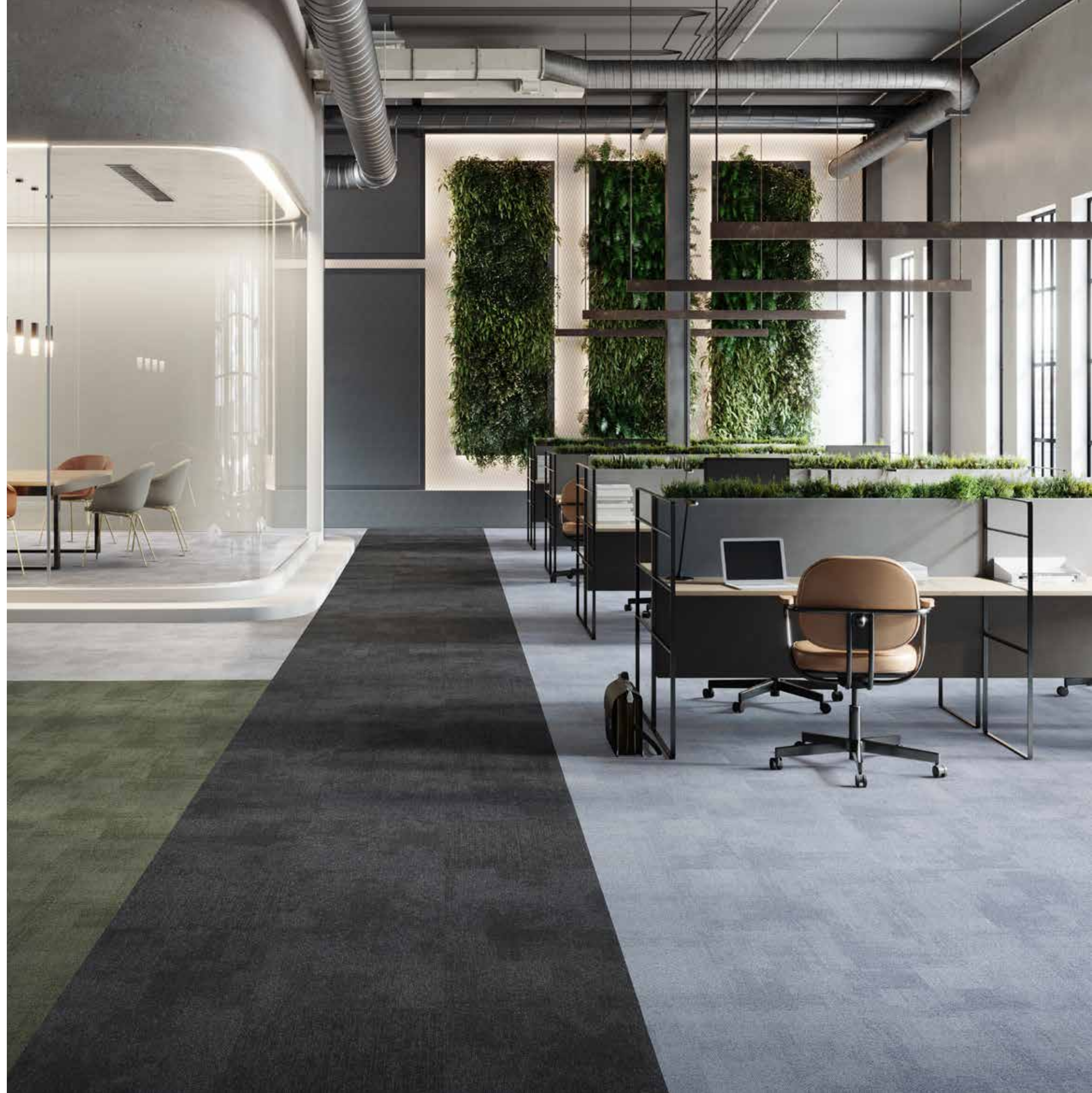


Get in touch

Want to learn more about IVC Commercial's flooring solutions, or need help tackling an exciting project? We've got you covered.

Go to [ivc-commercial.com](https://www.ivc-commercial.com) to browse our collections, order samples, download inspirational brochures or stop by one of our showrooms. You can also make an appointment with our dedicated team by sending us an email via info@ivc-commercial.com. Get in touch!

Follow us on     



Technical Specifications

Spécifications techniques - Technische specificaties - Technische Spezifikationen

Construction Structure - Structuur - Konstruktion	
Pile fibre composition Composition des fibres - Poolmateriaal - Material der Polnutschicht	
Secondary backing Envers - Rug - Beschichtung	
Total weight Poids total - Totaal gewicht - Gesamtgewicht	
Pile weight Poids du velours - Poolgewicht - Poleinsatzgewicht	
Surface pile weight Poids du velours utile - Effectieve poolmassa - Polnutschichtgewicht	
Total thickness Epaisseur totale - Totale dikte - Gesamtdicke	
Surface pile thickness Hauteur du velours - Poolhoogte - Poldicke	
Surface pile density Densité du velours - Pooldichtheid - Polrohndichte	
Number of tufts Nombre de boucles - Aantal noppen - Noppenzahl	
Wear classification Classement d'usage - Gebruiksklasse - Beanspruchungsklasse	EN 1307
Castor chair suitability Résistance aux chaises à roulettes - Rolstoelgeschiktheid - Stuhllolleneignung	EN 985
Fire classification Comportement au feu - Brandgedrag - Brandklasse	EN 13501-1
Dimensional stability Stabilité dimensionnelle - Dimensionele stabiliteit - Dimensionsstabilität	EN 986
Colour fastness to light Solidité des couleurs à la lumière - Lichtbestendigheid van de kleuren - Lichtechtheit	EN ISO 105-B02
Rubbing fastness Solidité au frottement - Wrijftechtheid - Reibechtheit	EN ISO 105-X12
Colour fastness to water Solidité à l'eau - Waterechtheid - Wasserechtheit	EN ISO 105-E01
Thermal resistance Résistance thermique - Warmtedoorlaatweerstand - Wärmedurchlasswiderstand	ISO 8302
Sound absorption Absorption phonique - Geluidsabsorptie - Schallabsorptionsgrad	EN ISO 354
Impact sound reduction Réduction phonique aux bruits d'impacts - Reductie contactgeluid - Trittschallverbesserungsmaß	EN ISO 10140-3
Permanent antistatic Antistatique permanent - Permanent antistatisch - Permanent antistatisch	ISO 6356
Number of colours Nombre de coloris - Aantal kleuren - Anzahl der Farben	
Size & Packaging Dimensions & Emballage - Formaat en verpakking - Abmessungen & Verpackung	
GUT-Prodís Number Numéro GUT Prodís - Nummer GUT Prodís - GUT-Prodís Nummer	
Warranty years Garantie ans - Garantie in jaren - Garantie Jahren	



Tufted 1/10" gauge loop
100% solution dyed nylon
EcoFlex™ Statera (modified bitumen, 70% recycled content)
± 4100 g/m ²
± 540 g/m ²
± 370 g/m ²
± 6,3 mm
± 3,1 mm
± 0,119 g/cm ³
176.300/ m ²
33 / LC1
A: intensive use
Bfl-s1
≤ 0,20%
≥ 7
≥ 4
≥ 4
0,072 m ² .K/W
0,15 αw
Hz 125 250 500 1000 2000 4000 αs -0,01 0,00 0,06 0,17 0,25 0,34
ΔLw = 32 dB
≤ 2 kV
32
50 x 50 cm 5 m ² /box - 24 boxes/pallet
3AA1D4DF
15



Expansion Point

Tufted 1/10" gauge loop
100% solution dyed nylon
EcoFlex™ Statera (modified bitumen, 70% recycled content)
± 4300 g/m ²
± 540 g/m ²
± 401 g/m ²
± 6,6 mm
± 3,3 mm
± 0,123 g/cm ³
172.200/ m ²
33 / LC2
A: intensive use
Bfl-s1
≤ 0,2%
≥ 7
≥ 4
≥ 4
0,0687 m ² .K/W
0,15 αw
Hz 125 250 500 1000 2000 4000 αs -0,03 0,07 0,06 0,18 0,37 0,44
ΔLw = 27 dB
≤ 2 kV
12
50 x 50 cm 5 m ² /box - 24 boxes/pallet
F6619831
15

Blurred Edge

Tufted 1/10" gauge loop
100% solution dyed nylon
EcoFlex™ Statera (modified bitumen, 70% recycled content)
± 5000 g/m ²
± 540 g/m ²
± 310 g/m ²
± 6,6 mm
± 2,5 mm
± 0,124 g/cm ³
168.100/ m ²
33 / LC1
A: intensive use
Bfl-s1
≤ 0,2%
≥ 7
≥ 4
≥ 4
0,0643 m ² .K/w
0,15 αw
Hz 125 250 500 1000 2000 4000 αw 0,02 0,03 0,06 0,19 0,31 0,37
ΔLw = 25 dB
≤ 2 kV
10
50 x 50 cm 5 m ² /box - 24 boxes/pallet
Ongoing
15



Technical Specifications

Spécifications techniques - Technische specificaties - Technische Spezifikationen

Construction Structure - Structuur - Konstruktion	
Pile fibre composition Composition des fibres - Poolmateriaal - Material der Polnutzschicht	
Secondary backing Envers - Rug - Beschichtung	
Total weight Poids total - Totaal gewicht - Gesamtgewicht	
Pile weight Poids du velours - Poolgewicht - Poleinsatzgewicht	
Surface pile weight Poids du velours utile - Effectieve poolmassa - Polnutzschichtgewicht	
Total thickness Epaisseur totale - Totale dikte - Gesamtdicke	
Surface pile thickness Hauteur du velours - Poolhoogte - Poldicke	
Surface pile density Densité du velours - Pooldichtheid - Polrohddichte	
Number of tufts Nombre de boucles - Aantal noppen - Noppenzahl	
Wear classification Classement d'usage - Gebruiksklasse - Beanspruchungsklasse	EN 1307
Castor chair suitability Résistance aux chaises à roulettes - Rolstoelgeschiktheid - Stuhllolleneignung	EN 985
Fire classification Comportement au feu - Brandgedrag - Brandklasse	EN 13501-1
Dimensional stability Stabilité dimensionnelle - Dimensionele stabiliteit - Dimensionsstabilität	EN 986
Colour fastness to light Solidité des couleurs à la lumière - Lichtbestendigheid van de kleuren - Lichtechtheit	EN ISO 105-B02
Rubbing fastness Solidité au frottement - Wrijftechtheid - Reibechtheit	EN ISO 105-X12
Colour fastness to water Solidité à l'eau - Waterechtheid - Wasserechtheit	EN ISO 105-E01
Thermal resistance Résistance thermique - Warmtedoorlaatweerstand - Wärmedurchlasswiderstand	ISO 8302
Sound absorption Absorption phonique - Geluidsabsorptie - Schallabsorptionsgrad	EN ISO 354
Impact sound reduction Réduction phonique aux bruits d'impacts - Reductie contactgeluid - Trittschallverbesserungsmaß	EN ISO 10140-3
Permanent antistatic Antistatique permanent - Permanent antistatisch - Permanent antistatisch	ISO 6356
Number of colours Nombre de coloris - Aantal kleuren - Anzahl der Farben	
Size & Packaging Dimensions & Emballage - Formaat en verpakking - Abmessungen & Verpackung	
GUT-Prodís Number Numéro GUT Prodís - Nummer GUT Prodís - GUT-Prodís Nummer	
Warranty years Garantie ans - Garantie in jaren - Garantie Jahren	

Perspective

Tufted 1/12" gauge loop
100% solution dyed nylon
EcoFlex™ Statera (modified bitumen, 70% recycled content)
± 4400 g/m ²
± 600 g/m ²
± 380 g/m ²
± 6,4 mm
± 3,1 mm
± 0,123 g/cm ³
209.100/m ²
33 / LC1
A: intensive use
Bfl-s1
≤ 0,2%
≥ 7
≥ 4
≥ 4
0,068 m ² .K/W
0,15 αw
Hz 125 250 500 1000 2000 4000 αs 0,00 0,02 0,06 0,20 0,33 0,42
ΔLw = 25 dB
≤ 2 kV
8
50 x 50 cm 5 m ² /box - 24 boxes/pallet
6119BCAA
15

View

Tufted 1/12" gauge loop
100% solution dyed nylon
EcoFlex™ Statera (modified bitumen, 70% recycled content)
± 4400 g/m ²
± 600 g/m ²
± 388 g/m ²
± 6,4 mm
± 3,1 mm
± 0,125 g/cm ³
229.500/m ²
33 / LC1
A: intensive use
Bfl-s1
≤ 0,2%
≥ 7
≥ 4
≥ 4
0,067 m ² .K/W
0,15 αw
Hz 125 250 500 1000 2000 4000 αs 0,00 0,02 0,06 0,20 0,30 0,39
ΔLw = 25 dB
≤ 2 kV
8
50 x 50 cm 5 m ² /box - 24 boxes/pallet
CAC6CFE5
15

Step Up

5/32" Tip Sheared
100% Duracolor® Premium Nylon (30% recycled content)
EcoFlex™ NXT
± 4575 g/m ²
± 1288 g/m ²
± 754 g/m ²
± 9 mm
± 5,2 mm
± 0,145 g/cm ³
93.600/m ²
33 / LC3
A: intensive use
Bfl-s1
≤ 0,2%
≥ 7
≥ 4
≥ 4
0,099 m ² .K/W
In progress
ΔLw = 29dB
≤ 2 kV
4
60,96 cm x 60,96 cm (24"x24") 5,2 m ² /box
Ongoing
15



Technical Specifications

Spécifications techniques - Technische specificaties - Technische Spezifikationen

Construction Structure - Structuur - Konstruktion	
Pile fibre composition Composition des fibres - Poolmateriaal - Material der Polnutzschicht	
Secondary backing Envers - Rug - Beschichtung	
Total weight Poids total - Totaal gewicht - Gesamtgewicht	
Pile weight Poids du velours - Poolgewicht - Poleinsatzgewicht	
Surface pile weight Poids du velours utile - Effectieve poolmassa - Polnutzschichtgewicht	
Total thickness Epaisseur totale - Totale dikte - Gesamtdicke	
Surface pile thickness Hauteur du velours - Poolhoogte - Poldicke	
Surface pile density Densité du velours - Pooldichtheid - Polrohdichte	
Number of tufts Nombre de boucles - Aantal noppen - Noppenzahl	
Wear classification Classement d'usage - Gebruiksklasse - Beanspruchungsklasse	EN 1307
Castor chair suitability Résistance aux chaises à roulettes - Rolstoelgeschiktheid - Stuhlrolleneignung	EN 985
Fire classification Comportement au feu - Brandgedrag - Brandklasse	EN 13501-1
Dimensional stability Stabilité dimensionnelle - Dimensionele stabiliteit - Dimensionsstabilität	EN 986
Colour fastness to light Solidité des couleurs à la lumière - Lichtbestendigheid van de kleuren - Lichtechtheit	EN ISO 105-B02
Rubbing fastness Solidité au frottement - Wrijftechtheid - Reibechtheit	EN ISO 105-X12
Colour fastness to water Solidité à l'eau - Waterechtheid - Wasserechtheit	EN ISO 105-E01
Thermal resistance Résistance thermique - Warmtedoorlaatweerstand - Wärmedurchlasswiderstand	ISO 8302
Sound absorption Absorption phonique - Geluidsabsorptie - Schallabsorptionsgrad	EN ISO 354
Impact sound reduction Réduction phonique aux bruits d'impacts - Reductie contactgeluid - Trittschallverbesserungsmaß	EN ISO 10140-3
Permanent antistatic Antistatique permanent - Permanent antistatisch - Permanent antistatisch	ISO 6356
Number of colours Nombre de coloris - Aantal kleuren - Anzahl der Farben	
Size & Packaging Dimensions & Emballage - Formaat en verpakking - Abmessungen & Verpackung	
GUT-Prodís Number Numéro GUT Prodís - Nummer GUT Prodís - GUT-Prodís Nummer	
Warranty years Garantie ans - Garantie in jaren - Garantie Jahren	

Balanced

Tufted 1/12" gauge loop
100% SDN Thrive® Matter (90% recycled content)
EcoFlex™ Statera (modified bitumen, 70% recycled content)
+/- 4400 g/m ²
+/- 720 g/m ²
+/- 466 g/m ²
+/- 7,0 mm
+/- 3,5 mm
+/- 0,133 g/cm ³
230.000/m ²
33 / LC2
A: intensive use
Bfl-s1
≤ 0,2%
≥ 7
≥ 4
≥ 4
0,070 m ² .K/W
0,20 <i>aw</i>
Hz 125 250 500 1000 2000 4000 a _s 0,00 0,02 0,07 0,19 0,29 0,41
ΔLw = 25 dB
≤ 2 kV
16
50 x 50 cm 4,5 m ² /box - 24 boxes/pallet
Ongoing
15

Tailored

Tufted 1/12" gauge loop
100% SDN Thrive® Matter (90% recycled content)
EcoFlex™ Statera (modified bitumen, 70% recycled content)
+/- 4400 g/m ²
+/- 720 g/m ²
+/- 474 g/m ²
+/- 6,9 mm
+/- 3,7 mm
+/- 0,128 g/cm ³
230.000/m ²
33 / LC2
A: intensive use
Bfl-s1
≤ 0,2%
≥ 7
≥ 4
≥ 4
0,080 m ² .K/W
0,20 <i>aw</i>
Hz 125 250 500 1000 2000 4000 a _s 0,00 0,02 0,07 0,19 0,29 0,41
ΔLw = 25 dB
≤ 2 kV
16
50 x 50 cm 4,5 m ² /box - 24 boxes/pallet
Ongoing
15

Unchained

Tufted 1/12" gauge loop
100% SDN Thrive® Matter (90% recycled content)
EcoFlex™ Statera (modified bitumen, 70% recycled content)
+/- 4400 g/m ²
+/- 720 g/m ²
+/- 511 g/m ²
+/- 7,1 mm
+/- 3,4 mm
+/- 0,150 g/cm ³
244.800/m ²
33 / LC2
A: intensive use
Bfl-s1
≤ 0,2%
≥ 7
≥ 4
≥ 4
0,080 m ² .K/W
0,20 <i>aw</i>
Hz 125 250 500 1000 2000 4000 a _s 0,00 0,02 0,07 0,19 0,29 0,41
ΔLw = 25 dB
≤ 2 kV
16
50 x 50 cm 4,5 m ² /box - 24 boxes/pallet
Ongoing
15



Technical Specifications

Spécifications techniques - Technische specificaties - Technische Spezifikationen

Construction Structure - Structuur - Konstruktion	
Pile fibre composition Composition des fibres - Poolmateriaal - Material der Polnutzschicht	
Secondary backing Envers - Rug - Beschichtung	
Total weight Poids total - Totaal gewicht - Gesamtgewicht	
Pile weight Poids du velours - Poolgewicht - Poleinsatzgewicht	
Surface pile weight Poids du velours utile - Effectieve poolmassa - Polnutzschichtgewicht	
Total thickness Epaisseur totale - Totale dikte - Gesamtdicke	
Surface pile thickness Hauteur du velours - Poolhoogte - Poldicke	
Surface pile density Densité du velours - Pooldichtheid - Polrohdichte	
Number of tufts Nombre de boucles - Aantal noppen - Noppenzahl	
Wear classification Classement d'usage - Gebruiksklasse - Beanspruchungsklasse	EN 1307
Castor chair suitability Résistance aux chaises à roulettes - Rolstoelgeschiktheid - Stuhlrolleneignung	EN 985
Fire classification Comportement au feu - Brandgedrag - Brandklasse	EN 13501-1
Dimensional stability Stabilité dimensionnelle - Dimensionele stabiliteit - Dimensionsstabilität	EN 986
Colour fastness to light Solidité des couleurs à la lumière - Lichtbestendigheid van de kleuren - Lichtechtheit	EN ISO 105-B02
Rubbing fastness Solidité au frottement - Wrijftechtheid - Reibechtheit	EN ISO 105-X12
Colour fastness to water Solidité à l'eau - Waterechtheid - Wasserechtheit	EN ISO 105-E01
Thermal resistance Résistance thermique - Warmtedoorlaatweerstand - Wärmedurchlasswiderstand	ISO 8302
Sound absorption Absorption phonique - Geluidsabsorptie - Schallabsorptionsgrad	EN ISO 354
Impact sound reduction Réduction phonique aux bruits d'impacts - Reductie contactgeluid - Trittschallverbesserungsmaß	EN ISO 10140-3
Permanent antistatic Antistatique permanent - Permanent antistatisch - Permanent antistatisch	ISO 6356
Number of colours Nombre de coloris - Aantal kleuren - Anzahl der Farben	
Size & Packaging Dimensions & Emballage - Formaat en verpakking - Abmessungen & Verpackung	
GUT-Prodís Number Numéro GUT Prodís - Nummer GUT Prodís - GUT-Prodís Nummer	
Warranty years Garantie ans - Garantie in jaren - Garantie Jahren	

Alternate

Tufted 1/12" gauge loop
100% SDN Thrive® Matter (90% recycled content)
EcoFlex™ Statera (modified bitumen, 70% recycled content)
± 4500 g/m²
± 700 g/m²
± 484 g/m²
± 7,0 mm
± 3,4 mm
± 0,142 g/cm³
224.400/m²
33 / LC2
A: intensive use
Bfl-s1
≤ 0,2%
≥ 7
≥ 4
≥ 4
0,072 m².K/W
0,15 αw
Hz 125 250 500 1000 2000 4000 αs -0,01 0,02 0,06 0,20 0,32 0,48
ΔLw = 24 dB
≤ 2 kV
18
50 x 50 cm 4,5 m²/box - 24 boxes/pallet
Ongoing
15

Liberate

Tufted 1/12" gauge loop
100% SDN Thrive® Matter (90% recycled content)
EcoFlex™ Statera (modified bitumen, 70% recycled content)
± 4500 g/m²
± 700 g/m²
± 489 g/m²
± 7,3 mm
± 3,6 mm
± 0,136 g/cm³
234.600/m²
33 / LC2
A: intensive use
Bfl-s1
≤ 0,2%
≥ 7
≥ 4
≥ 4
0,075 m².K/W
0,15 αw
Hz 125 250 500 1000 2000 4000 αs 0,00 0,03 0,06 0,21 0,34 0,54
ΔLw = 25 dB
≤ 2 kV
18
50 x 50 cm 4,5 m²/box - 24 boxes/pallet
Ongoing
15

Animate

Tufted 1/12" gauge loop
100% SDN Thrive® Matter (90% recycled content)
EcoFlex™ Statera (modified bitumen, 70% recycled content)
± 4500 g/m²
± 700 g/m²
± 433 g/m²
± 7,2 mm
± 3,3 mm
± 0,132 g/cm³
234.600/m²
33 / LC2
A: intensive use
Bfl-s1
≤ 0,2%
≥ 7
≥ 4
≥ 4
0,068 m².K/W
0,15 αw
Hz 125 250 500 1000 2000 4000 αs 0,00 0,02 0,06 0,20 0,30 0,47
ΔLw = 24 dB
≤ 2 kV
18
50 x 50 cm 4,5 m²/box - 24 boxes/pallet
Ongoing
15



Technical Specifications

Spécifications techniques - Technische specificaties - Technische Spezifikationen

Construction Structure - Structuur - Konstruktion	
Pile fibre composition Composition des fibres - Poolmateriaal - Material der Polnutzschicht	
Secondary backing Envers - Rug - Beschichtung	
Total weight Poids total - Totaal gewicht - Gesamtgewicht	
Pile weight Poids du velours - Poolgewicht - Poleinsatzgewicht	
Surface pile weight Poids du velours utile - Effectieve poolmassa - Polnutzschichtgewicht	
Total thickness Epaisseur totale - Totale dikte - Gesamtdicke	
Surface pile thickness Hauteur du velours - Poolhoogte - Poldicke	
Surface pile density Densité du velours - Pooldichtheid - Polrohdichte	
Number of tufts Nombre de boucles - Aantal noppen - Noppenzahl	
Wear classification Classement d'usage - Gebruiksklasse - Beanspruchungsklasse	EN 1307
Castor chair suitability Résistance aux chaises à roulettes - Rolstoelgeschiktheid - Stuhlrolleneignung	EN 985
Fire classification Comportement au feu - Brandgedrag - Brandklasse	EN 13501-1
Dimensional stability Stabilité dimensionnelle - Dimensionele stabiliteit - Dimensionsstabilität	EN 986
Colour fastness to light Solidité des couleurs à la lumière - Lichtbestendigheid van de kleuren - Lichtechtheit	EN ISO 105-B02
Rubbing fastness Solidité au frottement - Wrijftechtheid - Reibechtheit	EN ISO 105-X12
Colour fastness to water Solidité à l'eau - Waterrechtheid - Wasserechtheit	EN ISO 105-E01
Thermal resistance Résistance thermique - Warmtedoorlaatweerstand - Wärmedurchlasswiderstand	ISO 8302
Sound absorption Absorption phonique - Geluidsabsorptie - Schallabsorptionsgrad	EN ISO 354
Impact sound reduction Réduction phonique aux bruits d'impacts - Reductie contactgeluid - Trittschallverbesserungsmaß	EN ISO 10140-3
Permanent antistatic Antistatique permanent - Permanent antistatisch - Permanent antistatisch	ISO 6356
Number of colours Nombre de coloris - Aantal kleuren - Anzahl der Farben	
Size & Packaging Dimensions & Emballage - Formaat en verpakking - Abmessungen & Verpackung	
GUT-Prodís Number Numéro GUT Prodís - Nummer GUT Prodís - GUT-Prodís Nummer	
Warranty years Garantie ans - Garantie in jaren - Garantie Jahren	

Grit	Bruut	Rupture
1/12" Pattern Perfect®	1/12" Pattern Perfect®	1/12" Pattern Perfect®
ECONYL® 100% regenerated nylon	ECONYL® 100% regenerated nylon	ECONYL® 100% regenerated nylon
EcoFlex™ Echo (94% recycled felt)	EcoFlex™ Echo (94% recycled felt)	EcoFlex™ Echo (94% recycled felt)
± 5001 g/m²	± 5001 g/m²	± 5001 g/m²
± 750 g/m²	± 780 g/m²	± 780 g/m²
± 510 g/m²	± 498 g/m²	± 486 g/m²
± 8,6 mm	± 8,7 mm	± 8,7 mm
± 3,2 mm	± 3,3 mm	± 3,3 mm
± 0,159 g/cm³	± 0,151 g/cm³	± 0,147 g/cm³
± 132.080/ m²	± 132.080/ m²	± 132.080/ m²
33 / LC2	33 / LC2	33 / LC2
A: intensive use	A: intensive use	A: intensive use
Bfl-s1	Bfl-s1	Bfl-s1
≤ 0,2%	≤ 0,2%	≤ 0,2%
≥ 7	≥ 7	≥ 7
≥ 4	≥ 4	≥ 4
≥ 4	≥ 4	≥ 4
0,115 m².K/W	0,120 m².K/W	0,114 m².K/W
0,25 αw	0,30 αw	0,30 αw
Hz 125 250 500 1000 2000 4000 αs 0,00 0,03 0,43 0,20 0,28 0,39	Hz 125 250 500 1000 2000 4000 αs 0,00 0,03 0,33 0,25 0,36 0,55	Hz 125 250 500 1000 2000 4000 αs 0,01 0,03 0,37 0,24 0,35 0,55
ΔLw = 29 dB	ΔLw = 31 dB	ΔLw = 30 dB
≤ 2 kV	≤ 2 kV	≤ 2 kV
12	12	12
25 x 100 cm 4 m²/box - 24 boxes/pallet	25 x 100 cm 4 m²/box - 24 boxes/pallet	25 x 100 cm 4 m²/box - 24 boxes/pallet
Ongoing	Ongoing	Ongoing
15	15	15



Technical Specifications

Spécifications techniques - Technische specificaties - Technische Spezifikationen

Construction Structure - Structuur - Konstruktion	
Pile fibre composition Composition des fibres - Poolmateriaal - Material der Polnutzschicht	
Secondary backing Envers - Rug - Beschichtung	
Total weight Poids total - Totaal gewicht - Gesamtgewicht	
Pile weight Poids du velours - Poolgewicht - Poleinsatzgewicht	
Surface pile weight Poids du velours utile - Effectieve poolmassa - Polnutzschichtgewicht	
Total thickness Epaisseur totale - Totale dikte - Gesamtdicke	
Surface pile thickness Hauteur du velours - Poolhoogte - Poldicke	
Surface pile density Densité du velours - Pooldichtheid - Polrohdichte	
Number of tufts Nombre de boucles - Aantal noppen - Noppenzahl	
Wear classification Classement d'usage - Gebruiksklasse - Beanspruchungsklasse	EN 1307
Castor chair suitability Résistance aux chaises à roulettes - Rolstoelgeschiktheid - Stuhllolleneignung	EN 985
Fire classification Comportement au feu - Brandgedrag - Brandklasse	EN 13501-1
Dimensional stability Stabilité dimensionnelle - Dimensionele stabiliteit - Dimensionsstabilität	EN 986
Colour fastness to light Solidité des couleurs à la lumière - Lichtbestendigheid van de kleuren - Lichtechtheit	EN ISO 105-B02
Rubbing fastness Solidité au frottement - Wrijftechtheid - Reibechtheit	EN ISO 105-X12
Colour fastness to water Solidité à l'eau - Waterechtheid - Wasserechtheit	EN ISO 105-E01
Thermal resistance Résistance thermique - Warmtedoorlaatweerstand - Wärmedurchlasswiderstand	ISO 8302
Sound absorption Absorption phonique - Geluidsabsorptie - Schallabsorptionsgrad	EN ISO 354
Impact sound reduction Réduction phonique aux bruits d'impacts - Reductie contactgeluid - Trittschallverbesserungsmaß	EN ISO 10140-3
Permanent antistatic Antistatique permanente - Permanent antistatisch - Permanent antistatisch	ISO 6356
Number of colours Nombre de coloris - Aantal kleuren - Anzahl der Farben	
Size & Packaging Dimensions & Emballage - Formaat en verpakking - Abmessungen & Verpackung	
GUT-Prodís Number Numéro GUT Prodís - Nummer GUT Prodís - GUT-Prodís Nummer	
Warranty years Garantie ans - Garantie in jaren - Garantie Jahren	

Flare	Reflect	Basalt	Jute
1/12" Pattern Perfect®	1/12" Pattern Perfect®	Tufted 1/12" gauge loop	Tufted 1/12" gauge loop
100% solution dyed nylon	100% solution dyed nylon	100% solution dyed nylon	100% solution dyed nylon
EcoFlex™ Statera (modified bitumen, 70% recycled content)	EcoFlex™ Statera (modified bitumen, 70% recycled content)	EcoFlex™ Statera (modified bitumen, 70% recycled content)	EcoFlex™ Statera (modified bitumen, 70% recycled content)
± 4000 g/m²	± 4000 g/m²	± 4400 g/m²	± 4400 g/m²
± 540 g/m²	± 540 g/m²	± 600 g/m²	± 600 g/m²
± 346 g/m²	± 313 g/m²	± 390 g/m²	± 415 g/m²
± 6,3 mm	± 6,1 mm	± 6,4 mm	± 6,4 mm
± 3,0 mm	± 3,0 mm	± 3,1 mm	± 3,2 mm
± 0,115 g/cm³	± 0,104 g/cm³	± 0,125 g/cm³	± 0,127 g/cm³
± 198.394/ m²	± 198.394/ m²	224.400/m²	224.400/m²
33 / LC1	33 / LC1	33 / LC1	33 / LC2
A: intensive use	A: intensive use	A: intensive use	A: intensive use
Bfl-s1	Bfl-s1	Bfl-s1	Bfl-s1
≤ 0,2%	≤ 0,2%	≤ 0,2%	≤ 0,2%
≥ 7	≥ 7	≥ 7	≥ 7
≥ 4	≥ 4	≥ 4	≥ 4
≥ 4	≥ 4	≥ 4	≥ 4
0,070 m².K/W	0,070 m².K/W	0,066 m².K/w	0,069 m².K/W
0,15 αw	0,15 αw	0,15 αw	0,15 αw
Hz 125 250 500 1000 2000 4000 αs 0,00 0,03 0,06 0,16 0,27 0,36	Hz 125 250 500 1000 2000 4000 αs 0,00 0,02 0,06 0,16 0,28 0,37	Hz 125 250 500 1000 2000 4000 αw 0,02 0,03 0,08 0,16 0,29 0,33	Hz 125 250 500 1000 2000 4000 αw 0,02 0,02 0,07 0,16 0,29 0,33
ΔLw = 24 dB	ΔLw = 25 dB	ΔLw = 28 dB	ΔLw = 28 dB
≤ 2 kV	≤ 2 kV	≤ 2 kV	≤ 2 kV
8	8	12	12
50 x 50 cm 5 m²/box - 24 boxes/pallet	50 x 50 cm 5 m²/box - 24 boxes/pallet	50 x 50 cm 5 m²/box - 24 boxes/pallet	50 x 50 cm 5 m²/box - 24 boxes/pallet
Ongoing	Ongoing	65EB708B	94EFC68
		15	15



FLEXLOK

Teak	Clay	Clay Create	Metallic Clay
Tufted 1/12" gauge loop	Tufted 1/12" gauge loop	Tufted 1/12" gauge loop	Tufted 1/12" gauge loop
100% solution dyed nylon	100% solution dyed nylon	100% solution dyed nylon	100% solution dyed nylon
EcoFlex™ Statera (modified bitumen, 70% recycled content)	EcoFlex™ Statera (modified bitumen, 70% recycled content)	EcoFlex™ Statera (modified bitumen, 70% recycled content)	EcoFlex™ Statera (modified bitumen, 70% recycled content)
± 4400 g/m ²	± 4495 g/m ²	± 4495 g/m ²	± 4495 g/m ²
± 600 g/m ²	± 600 g/m ²	± 600 g/m ²	± 600 g/m ²
± 370 g/m ²	± 384 g/m ²	± 384 g/m ²	± 384 g/m ²
± 6,4 mm	± 7,1 mm	± 7,1 mm	± 7,1 mm
± 2,9 mm	± 3,4 mm	± 3,4 mm	± 3,4 mm
± 0,127 g/cm ³	± 0,115 g/cm ³	± 0,115 g/cm ³	± 0,115 g/cm ³
224.400/m ²	205.000/ m ²	205.000/ m ²	205.000/m ²
33 / LC1	33 / LC1	33 / LC1	33 / LC1
A: intensive use	A: intensive use	A: intensive use	A: intensive use
Bfl-s1	Bfl-s1	Bfl-s1	Bfl-s1
≤ 0,2%	≤ 0,2%	≤ 0,2%	≤ 0,2%
≥ 7	≥ 7	≥ 7	≥ 7
≥ 4	≥ 4	≥ 4	≥ 4
≥ 4	≥ 4	≥ 4	≥ 4
0,065 m ² .K/W	0,076 m ² .K/W	0,076 m ² .K/W	0,076 m ² .K/W
0,15 aw	0,15 aw	0,15 aw	0,20 aw
Hz 125 250 500 1000 2000 4000 aw 0,01 0,03 0,07 0,16 0,29 0,33	Hz 125 250 500 1000 2000 4000 as 0,02 0,03 0,07 0,19 0,34 0,57	Hz 125 250 500 1000 2000 4000 as 0,02 0,03 0,07 0,19 0,34 0,57	Hz 125 250 500 1000 2000 4000 as 0,02 0,02 0,08 0,21 0,32 0,45
ΔLw = 28 dB	ΔLw = 28 dB	ΔLw = 28 dB	ΔLw = 26 dB
≤ 2 kV	≤ 2 kV	≤ 2 kV	≤ 2 kV
12	12	12	9
50 x 50 cm 5 m ² /box - 24 boxes/pallet	25 x 100 cm 5 m ² /box - 24 boxes/pallet	25 x 100 cm 5 m ² /box - 24 boxes/pallet	25 x 100 cm 5 m ² /box - 24 boxes/pallet
AB56D646	E4C2F79C	5E8698AB	9ADE6ED5
15	15	15	15

Photographic images are not representative due to variations in colour printing.
The representative samples shown are sectional definitions. For full design representation, please visit the website.





www.ivc-commercial.com

